

# ***DESTINATION***



# ***CATALINA***

# 39 MKTS

What do you get when you combine luxury and affordability? The Catalina 39MKTS! A master bedroom that features a large slide out king bed, full length rear closet, and washer-dryer prep highlight the floorplan. To add to amazement, throw in a large bathroom with spacious shower, a kitchen designed for entertaining, and large bay windows that showcase beautiful views and natural sunlight. This is the perfect opportunity to finally have that home away from home!

SANDCASTLE DECOR







One of the most versatile floorplans in our Destination line-up, the 39FKTS accommodates just about any size family! A slide-out bed and built in dresser are key features to the master bedroom, while a spacious slide out bunkroom sits just down the hall. Up front in the kitchen, the impressive wrap around counter top space provides plenty of meal prep and serving space!

The large breakfast bar is a perfect place to enjoy morning coffee or afternoon snacks. Enjoy fantastic views, and easy entry through the huge glass sliding patio door. Simply put, the 39FKTS is tough to beat!

***DESTINATION***

**39FKTS**

# 40BHTS

Ever feel short on space and privacy while camping? Not anymore with the 40BHTS! The master bedroom up front features a spacious slide-out bed, oversized bay windows, and a large wardrobe and entertainment center. A huge bathroom separates the master from the large centrally located kitchen.



The slide out bunkroom (top picture) is excellent for comfort and privacy, perfectly located at the opposite end from the master. It features a full close door, wardrobe and entertainment center, with enough beds to sleep 4-6.

Whether keeping dinner simple, snacks close, or you're entertaining the neighborhood, it's tough to beat the convenience of the optional full size exterior kitchen (bottom picture). Let's make the 40BHTS the anchor of your campground today!

# CATALINA



**FREE!**



- Living Room and Master Bedroom Ceiling Fans w/ Wall Switch • All-In-One Monitor System • 5/8" Tongue and Groove Plywood Flooring • 15K Ducted A/C • Bar Stools
- E-Coat Sport Style Wheel Package • Glass Step-In Shower w/ ABS Surround

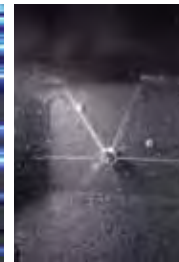
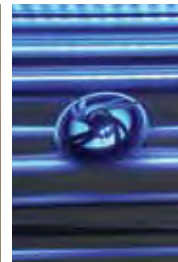
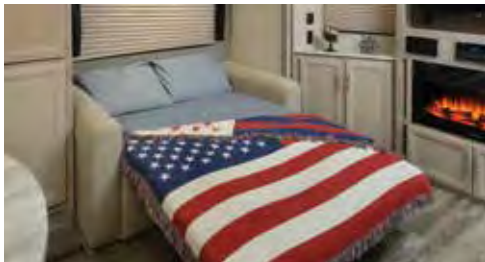
**RETAIL VALUE \$1,125**



## DESTINATION EDITION VALUE PACKAGE

**FREE!**

## EXTENDED STAY CONVENIENCE PACKAGE



- Furrion Fireplace in Living Room
- Black Tank Flush
- Residential Style Tri-fold Sofa
- Serta Mattress • Washer/Dryer Prep (Per FP)
- (2) Outside LED Light Marine Grade Speakers
- XL Grab Handle at Main Entrance
- 10 Gallon Gas/Electric DSI Water Heater
- Hot/Cold Outside Shower

**RETAIL VALUE \$1,225**

**FREE!**

## HOME ENTERTAINMENT PACKAGE



- 32" Sansui Flat Screen Living Room TV • Swing Arm TV Bracket
- Furrion DVD/mp3/FM Stereo w/ Bluetooth and USB Charging Port
- Upgraded In-Wall Speaker System

**RETAIL VALUE \$665**

**FREE!**

## DESIGNER KITCHEN PACKAGE



- Residential Pull Down Faucet • Deep Basin Undermount 50/50 Sink • Furrion Range Oven w/ Blue LED Accent Lighting and Flush Mounted Glass Top
- Waterfall Edge Thermofoil Countertops • Styled Mosaic Tile Backsplash

**RETAIL VALUE \$1,095**

# STANDARDS + OPTIONS

## CONSTRUCTION AND EQUIPMENT FEATURES

CAMBERED STRUCTURAL STEEL I-BEAM FRAME	S
FULL LENGTH FRAME OUT RIGGERS	S
5/8" TONGUE & GROOVE PLYWOOD FLOOR DECKING	P
2"X3" FLOOR JOISTS ON APPROXIMATELY 12" CENTERS	S
84" CEILING HEIGHT	S
3/8" FULLY DECKED WALK-ON ROOF	S
SEAMLESS DICOR ROOF WITH 12 YEAR WARRANTY	S
EASY-TRAC RACK AND PINION SLIDE-OUT(S)	S
R-7 FIBERGLASS INSULATION THROUGHOUT	S
GAS/ELECTRIC DSI WATER HEATER	P
WATER HEATER BY-PASS WINTERIZATION KIT	S
15,000 BTU DUCTED A/C	P
35,000 BTU AUTO-IGNITION FURNACE W/WALL THERMOSTAT	S
12V DEMAND WATER PUMP	S
PLATINUM .024" ALUMINUM SKIN W/.030 SKIRT METAL	S
DEXTER EZ LUBE AXLES W/LEAF SPRING SUSPENSION	S
SELF ADJUSTING BRAKES	S
ROTO-CAST HOLDING TANKS	S
PAINTED BUMPER W/ DRAIN HOSE CARRIER AND END CAPS	S
50 AMP ELECTRICAL SERVICE	S

## EXTERIOR FEATURES

BLACK TANK FLUSH	P
RESIDENTIAL SLIDING GLASS DOOR	S
LARGE FRONT BAY WINDOWS	S
XL SWING ARM GRAB HANDLE	P
MANUAL TONGUE JACK	S
TWO 30LB. LP BOTTLES W/ABS COVER	S
FLUSH MOUNT BAGGAGE DOORS W/RADIUS CORNERS	S
FOUR STABILIZER JACKS	S
G20 TINTED WINDOWS	S
(2) MARINE GRADE EXTERIOR SPEAKERS W/LED LIGHTING	P
RADIUS CORNERED FIBERGLASS ENTRY DOOR	S
ENTRY DOOR SAFETY WINDOW	S
ALUMINUM FENDER SKIRTS	S
E-COAT SPORT STYLE WHEELS	P
EXTERIOR 110V G.F.C.I PROTECTED RECEPTACLE	P
EXTERIOR RG-6 COAX CABLING AND SATELLITE PREP	P

## EXTERIOR FEATURES (CONTINUED)

RAIN GUTTERS WITH DRIP SPOUTS	S
RADIUS ENTRY STEPS	S
OUTSIDE SHOWER W/HANDLE HOLD	P

## INTERIOR FEATURES

DROP EDGE THERMOFOIL SEAMLESS COUNTER TOPS	P
SCREWED CABINET CONSTRUCTION W/POCKET	S
BORED LUMBER CORE STILES	S
CONGOLEUM WOODPLANK LINOLEUM FLOORING	S
SALVAGED LIGHT OAK CABINETS	S
ALL-IN-ONE MONITOR PANEL	P
STEREO W/ DVD PLAYER, CD,MP3, USB AND AM/FM RADIO	P
39" FLATSCREEN TV W/SWING ARM TV BRACKET	P
IN-WALL MOUNTED INTERIOR SPEAKERS	P
DEEP UNDERMOUNT DUAL BASIN 50/50 SINK	P
KITCHEN SINK COVERS	S
RESIDENTIAL PULL DOWN SPRAYER FAUCET	P
BALL-BEARING KITCHEN DRAWER GUIDES	S
MICROWAVE	S
HOME STYLE REFRIGERATOR	P
3 BURNER RANGE W/FLUSH MOUNT GLASS TOP	P
OVEN WITH BLUE LED ACCENT LIGHTING	P
RANGE HOOD	S
SILVERWARE KITCHEN DRAWER	S
MOSAIC TILE BACKSPLASH	P
RESIDENTIAL IN-FLOOR DUCTED HEAT	S
LED INTERIOR LIGHTING	S
RESIDENTIAL TRI-FOLD SOFA	P
SOFA DECORATIVE THROW PILLOWS	S
70" SLIDE OUT ROOM HEIGHT	S
HARD VALANCE WINDOW TREATMENT (LR)	S
PLEATED NIGHT WINDOW SHADES	S
PEDESTAL THERMOFOIL DINETTE TABLE	S
DINETTE STORAGE UNDER BENCHES	S
EASY ACCESS BOOTH DINETTE STORAGE DOORS	S
MARINE TOILET WITH FOOT FLUSH	S
SKYLIGHT ABOVE TUB/SHOWER	S
GLASS STEP-IN SHOWER W/ABS SURROUND	P

## INTERIOR FEATURES (CONTINUED)

MEDICINE CABINET WITH MIRROR	S
SOLID MASTER BEDROOM DOOR(S)	S
SOLID BUNK ROOM DOOR	S
NIGHT STANDS BUILT INTO BED SLIDE OUT WALLS	S
MASTER BEDROOM OVERHEAD CABINETS	S
QUILTED DESIGNER BEDSPREAD	S
TEDDY BEAR BUNK MATS	S
FURRION FIREPLACE IN THE LIVING ROOM	P
BAR STOOLS	P
SERTA MATTRESS	P
CEILING FANS IN LR AND MASTER W/WALL SWITCH	P
WASHER/DRYER PREP (39MKTS & 39RLTS ONLY)	P

## SAFETY FEATURES

SMOKE ALARM	S
LP/CO2 GAS DETECTOR	S
FIRE EXTINGUISHER	S
FIRE ESCAPE WINDOWS	S
DEAD-BOLT LOCK ON ENTRY DOOR	S

## OPTIONS

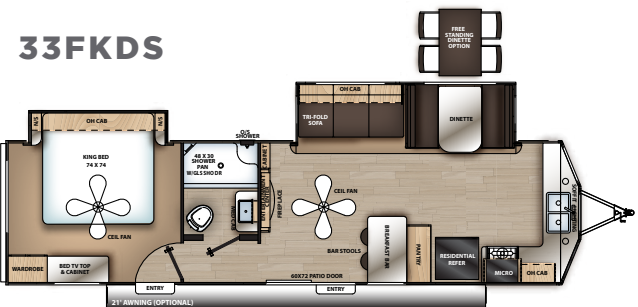
ENCLOSED UNDERBELLY	O
2ND A/C 13.5K BTU	O
FREE STANDING TABLE W/4 CHAIRS	O
FULL SIZE EXTERIOR CAMP KITCHEN (40BHTS ONLY)	O
POWER ELECTRIC AWNING W/LED LIGHT	O
SPARE TIRE W/CARRIER & COVER	O
NON-SELF CONTAINED TOILET <small>(FRESH WATER TANK AND PUMP, NO BLACK AND GREY TANKS WITH A DIRECT DUMP)</small>	O
DETACHABLE HITCH	O
CSA STANDARDS	O

**KEY:** S - STANDARD O - OPTION P - PACKAGE FEATURE

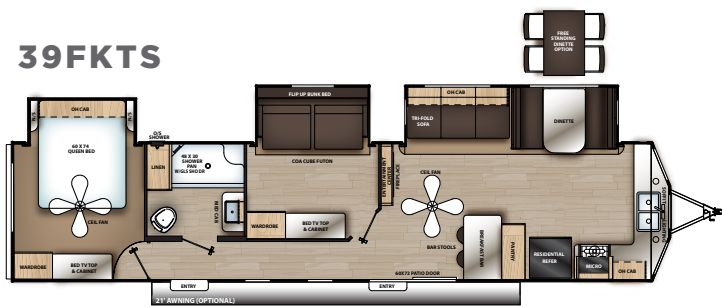


# FLOORPLANS + SPECIFICATIONS

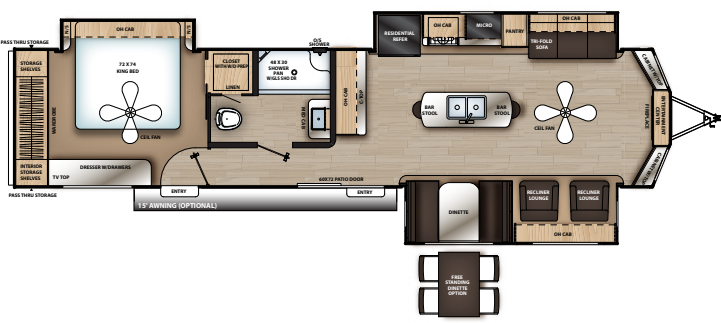
**33FKDS**



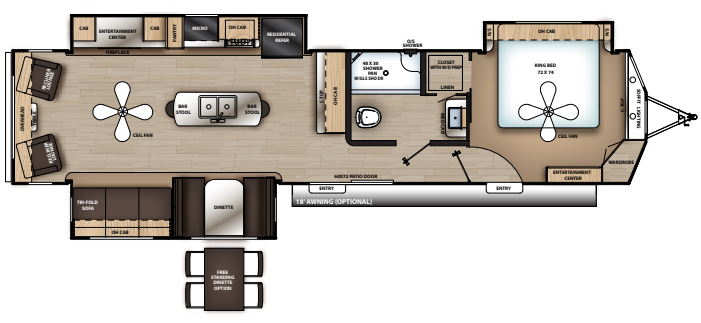
**39FKTS**



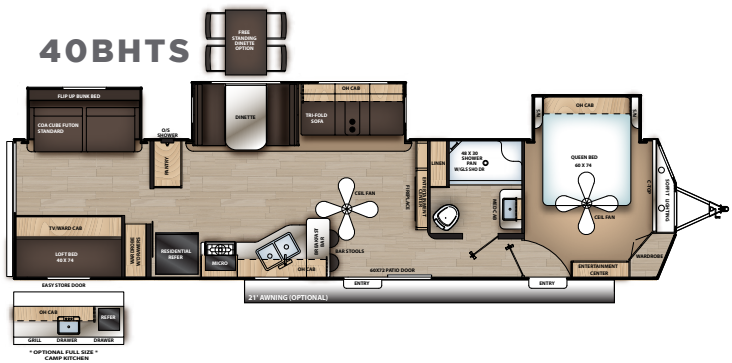
**39MKTS**



**39RLTS**



**40BHTS**



2019 CATALINA DESTINATION	33FKDS	39FKTS	39MKTS	39RLTS	40BHTS
SHIPPING WEIGHT	8,060	9,480	9,350	9,702	9,610
CARRYING CAPACITY	2,380	1,460	1,590	1,238	1,330
UWW	8,120	9,540	9,410	9,762	9,670
GVWR	10,500	11,000	11,000	11,000	11,000
HITCH WEIGHT	1,102	1,110	1,330	1,494	1,130
EXTERIOR HEIGHT (INCLUDES A/C)	11' 6"	11' 8"	11' 8"	11' 8"	11' 8"
FRESH WATER CAPACITY (GAL.)	44	44	44	44	44
GREY WATER CAPACITY (GAL.)	80	80	80	80	80 ***
WASTE WATER CAPACITY (GAL.)	30	40	30	30	40
AWNING LENGTH	21'	21'	15'	18'	21'
WHEEL SIZE	15"	15"	15"	15"	15"
EXTERIOR LENGTH (INCLUDES BUMPER TO HITCH)	35' 0"	40' 9"	40' 9"	40' 9"	40' 9"
EXTERIOR WIDTH	96"	96"	96"	96"	96"
INTERIOR HEIGHT (COACH)	84"	84"	84"	84"	84"
AXLES	5100 lbs.	5100 lbs.	5100 lbs.	5100 lbs.	5100 lbs.

\*\*\*110 W/ CAMP KITCHEN OPTION

# CATALINA

## LEGACY EDITION *SBX* TRAILBLAZER DESTINATION



**24/7 EMERGENCY  
ROADSIDE ASSISTANCE  
WITH VEHICLE PURCHASE\***

TOWING	WINCH-OUT
JUMP-STARTS	MOBILE MECHANIC
TIRE CHANGES	TECHNICAL
FLUID DELIVERY	SUPPORT
LOCKOUT	DEALER LOCATOR
SERVICE	SERVICES



\*VALID FOR 1 YEAR FROM DATE OF PURCHASE

GVWR (Gross Vehicle Weight Rating) - is the maximum permissible weight of the unit when fully loaded. It includes all weights, inclusive of all fluids, cargo, optional equipment and accessories. For safety and product performance do NOT exceed the GVWR.

GAWR (Gross Axle Weight Rating) - is the maximum permissible weight, including cargo, fluids, optional equipment and accessories that can be safely supported by a combination of all axles.

UVW (Unloaded Vehicle Weight)\* - is the typical weight of the unit as manufactured at the factory. It includes all weight at the unit's axle(s) and tongue or pin and LP Gas. The UVW does not include cargo, fresh potable water, additional optional equipment or dealer installed accessories.

\*Estimated Average based on standard build optional equipment.

CCC (Cargo Carrying Capacity)\*\* - is the amount of weight available for fresh potable water, cargo, additional optional equipment and accessories. CCC is equal to GVWR minus UVW. Available CCC should accommodate fresh potable water (8.3 lbs per gallon). Before filling the fresh water tank, empty the black and gray tanks to provide for more cargo capacity.

\*\* Estimated average based on standard build optional equipment

Each Forest River RV is weighed at the manufacturing facility prior to shipping. A label identifying the unloaded vehicle weight of the actual unit and the cargo carrying capacity is applied to every Forest River RV prior to leaving our facilities. The load capacity of your unit is designated by weight, not by volume, so you cannot necessarily use all available space when loading your unit.

All information contained in this brochure is believed to be accurate at the time of publication. However, during the model year, it may be necessary to make revisions and Forest River, Inc., reserves the right to make all such changes without notice, including prices, colors, materials, equipment and specifications as well as the addition of new models and the discontinuance of models shown in this brochure. Therefore, please consult with your Forest River, Inc., dealer and confirm the existence of any materials, design or specifications that are material to your purchase decision.

For more details including videos, 360 views, photos and to see how Coachmen is leading the great outdoors, visit [www.coachmenrv.com](http://www.coachmenrv.com)

Coachmen Industries 423 N. Main St., Middlebury, IN 46540  
Phone: 574-825-5821

**CUSTOMER SATISFACTION**



**www.ForestRiverBuyLocal.com**



**COACHMEN OWNERS ASSOCIATION**

**FREE MEMBERSHIP**

[www.coachmenowners.com](http://www.coachmenowners.com)



**Learn More**  
Scan this barcode using a QR Reader on your smart phone to learn more about Forest River.



A Berkshire Hathaway company.

We are proud of our Coachmen Families. Share your memories at:



#coachmencatalina



Coachmen Recreational  
Vehicles

**YOUR CATALINA DEALER**