

**NORTHERN
SPIRIT
ULTRA LITE
RV CARE APPROVED**

CAMPING SIMPLIFIED



Available Exclusively
at Authorized
RV Care Dealerships



NORTHERN SPIRIT ULTRA LITE RV/CARE/APPROVED

The Northern Spirit Ultra Lite is the most user-friendly travel trailer on the market today.

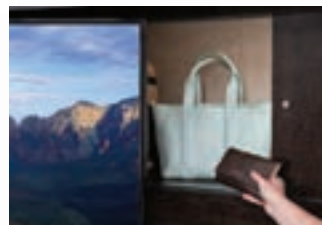
CAMPING SIMPLIFIED

Northern Spirit has the right features in the right places to make your camping experience more enjoyable. Well designed storage spaces provide easy access to everything. Traveling with your pet adds to the adventure. Northern Spirit makes it easy and convenient to take your furry family members with you for fun and relaxation on the go.

Setting the Standard for Convenience



Pass-through Fishing Rod Storage



Valuables Hutch (N/A all models)



Tool Center



Sink Cover Storage



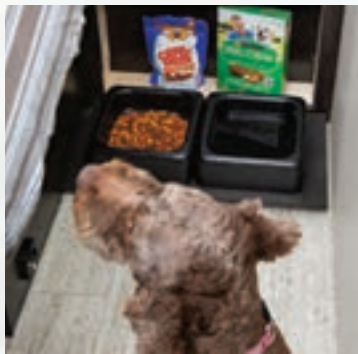
Kids Convenience Center with USB Port, 110V Outlet and Reading Light



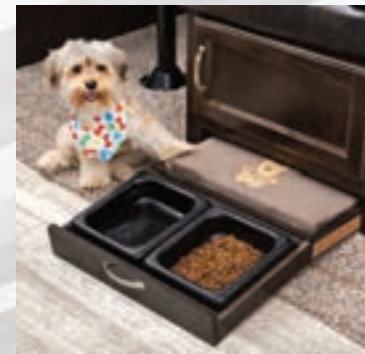
"Easy Up" Quick Connect Stabilizer Jack Bit, with Handy Motion Activated Light



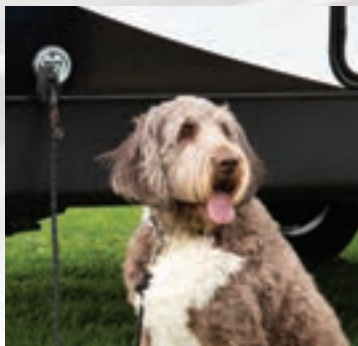
Exterior Dog Wash



Pet Center



Pet Center Plus (3373RL, 3379BH)



Exterior Dog Leash Clip

You love your pets, so take them with you! Northern Spirit was designed with pets in mind. Handy storage and outdoor features make taking a trip together hassle-free!



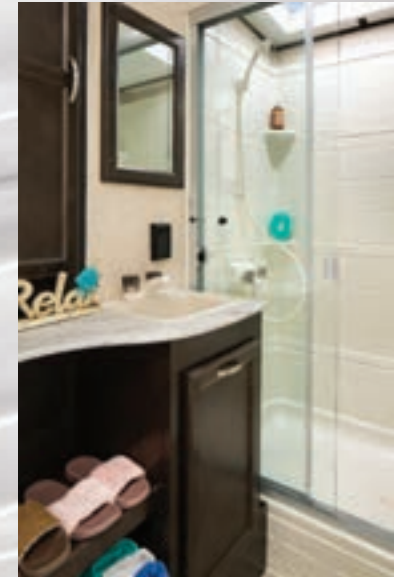
Check out the Northern Spirit Video

CAMPING SIMPLIFIED



3373RL

The 3373RL's open, well-lit interior is loaded with conveniences including a kitchen island, theater seating and a family-friendly booth dinette.



Contemporary 30" x 50" shower with plenty of storage.



2963BH

Spacious living room

Hanger Closet (N/A all models)





2963BH

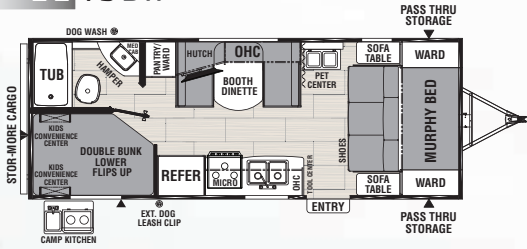
The family-friendly 2963BH offers trifold sofa sleepers, a U-shape dinette and oversized bunks.

Camping Simplified Model Naming

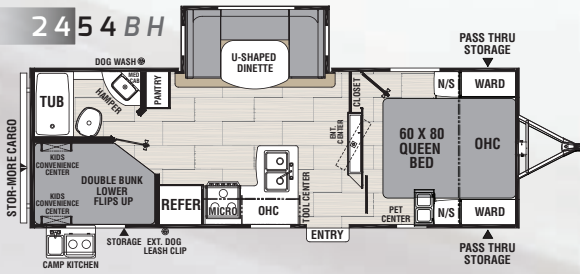
First 2 numbers = Approximate box length
 Second 2 numbers = Approximate weight
 2 Letters = Floor plan description

Bunk Models

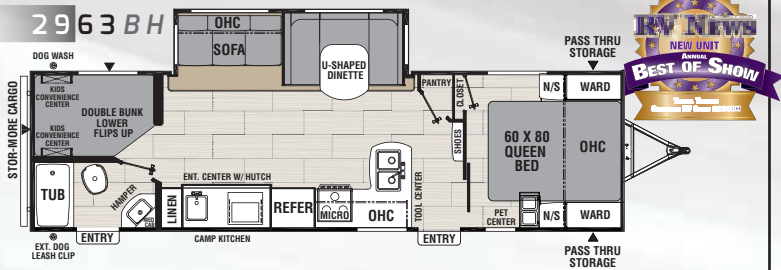
2245BH



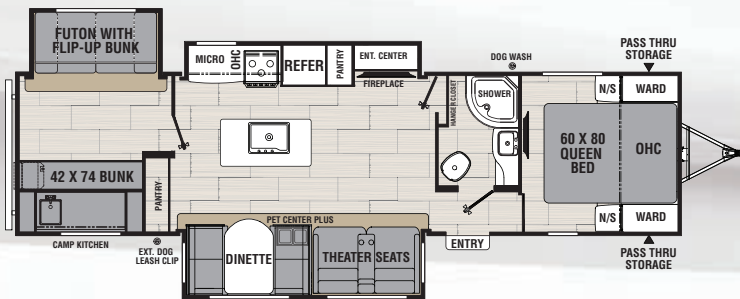
2454BH



2963BH

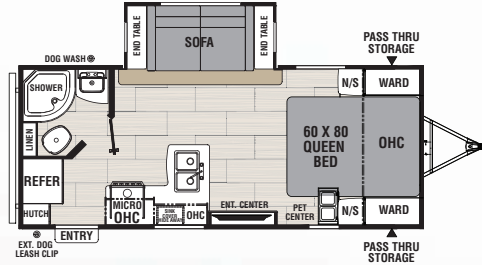


3379BH



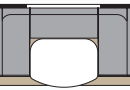
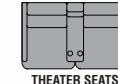
Non Bunk Models

1943RB

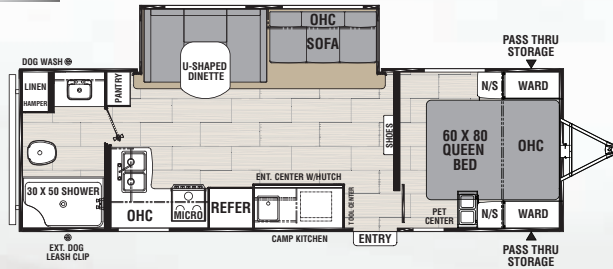


Have It Your Way - Option a dinette, theater seating or a tri-fold sofa

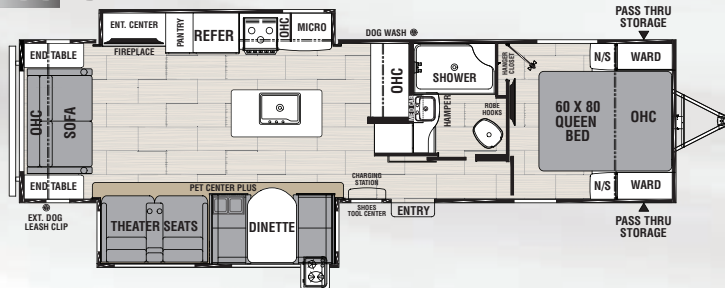
Options



2758RB



3373RL



| Models | Bunk Models | | | | Non-Bunk Models | | |
|---|-------------|--------|---------|---------|-----------------|---------|--------|
| | 2245BH | 2454BH | 2963BH | 3379BH | 1943RB | 2758RB | 3373RL |
| Hitch Weight (lbs.) | 462 | 728 | 760 | TBD | 520 | 728 | 940 |
| Carrying Capacity (lbs.) | 1,500 | 2,098 | 1,192 | TBD | 1,500 | 1,466 | 2,100 |
| UVW (lbs.) | 4,588 | 5,462 | 6,408 | TBD | 4,809 | 6,134 | 7,584 |
| Exterior Length (Includes Bumper to Hitch) | 25' 5" | 28' 9" | 33' 11" | 36' 11" | 23' 10" | 30' 11" | 36' 6" |
| Exterior Height (Incl. A/C) | 10' 10" | 11' 1" | 11' 1" | 11' 4" | 11' 1" | 11' 1" | 11' 4" |
| Awning Length | 17' | 18' | 18' | 10' | 15' | 18' | 10' |
| Fresh Water Capacity (gal.) | 49 | 49 | 49 | 49 | 49 | 49 | 49 |
| Grey Water Capacity (gal.) | 33 | 33 | 33 | 33 | 33 | 33 | 33 |
| Waste Water Capacity (gal.) | 33 | 33 | 33 | 33 | 33 | 33 | 33 |
| Wheel Size | 14" | 14" | 14" | 15" | 14" | 14" | 15" |

Please refer to back cover for chart definitions

More Camping Simplified Features



Sofa Cup Holders



Bottle Opener



"Twice Cool" Dual Air Conditioning Duct System



Motion Activated Floor Lights



Lighted USB Ports



Laundry Center

Standard Features and Options

Camping Simplified Features

- Motion Activated Floor Lights (Bedroom and bathroom)
- Hanger Closet (N/A all models)
- Store-More Cargo Center (Bunk models)
- Valuables Hutch (N/A all models)
- "Twice Cool" Dual Ducted Air Conditioning System
- Sofa Cup Holders
- Trash Can
- Lighted USB Ports
- Kids Convenience Center
- "Easy Up" Quick Connect Stabilizer Jack Bit
- Exterior Dog Leash Clip
- Exterior Fishing Pole Storage
- Motion Activated Pass Through Storage Light
- Bottle Opener
- Sink Cover Storage
- Pet Center
- Pet Center Plus (3373RL, 3379BH only)

Standard Features (Exterior)

- Magnetic Door Catches
- Drip Rails w/ Downspouts
- Heated and Enclosed Underbelly
- Cable / Satellite Prep

Northern Spirit Construction

1. Tinted, safety glass windows
2. Crowned trusses
3. 3/8" Roof decking
4. EPDM rubber roofing
5. Azdel composite panels
6. Aerodynamic front profile
7. Dual 20 lb. LP gas tanks
8. Welded aluminum structure, fully laminated sidewalls and floor
9. Smooth exterior fiberglass skin
10. Aluminum framed openings
11. Fully enclosed, heated underbelly
12. Fully welded tubular aluminum floor structure
13. Congoleum Designer Carefree Resilient Flooring
14. Norco welded I-beam frame
15. Super-Lube® axle hubs
16. Stable-Ryd® spread axle design
17. Nitrogen filled radial tires

- Triple Entry Steps
- Extended Grab Handle
- Angled Stabilizer Scissor Jacks
- Black Tank Flush
- Exterior Speakers
- Wide Stance Axles
- Power Awning
- Solar Prep
- Dog Wash
- Front Rock Guard
- Power Tongue Jack
- Spare Tire
- Detachable Power Chord
- 20 lbs. LP Tanks
- Water Heater By Pass
- Aluminum Rims
- E-Z Lube® Axles

Standard Features (Interior)

- Kitchen/Living Room
- Seamless Thermo Foil Wrapped Countertop
- Deluxe High Rise Faucet
- Double Bowl Stainless Steel Sink
- Stainless Steel Microwave
- Furrion Oven w/ 3 Burner Cook Top and Folding Glass Cover
- Under Dinette Storage Doors
- Refrigerator w/ Stainless Steel Insert

- Tri Fold Sofa Sleeper (most models)
- AM/FM DVD Player
- Lighted USB
- Ducted Furnace
- 6 Gallon Gas/Electric Water Heater w/ 17.3 Gallon Recovery
- 55 Amp Power Converter
- LED TV
- Bunk Ladder
- Bunk Privacy Curtains
- 13.5 BTU Air Conditioner
- Pantry w/ Removable Shelves (most models)
- 4 Speakers
- Sink Covers

Bathroom

- Designer Shower Curtain
- Towel Hooks
- Tooth Brush Holder
- Tub Surround
- Power Vent
- Skylight
- Seamless Thermo Foil Wrapped Countertop

Bedroom

- Bedside Night Stands
- Shirt Closets
- Lighted USB's
- Outlets
- Above Bed Shelf
- Designer Comforter
- Reading Lights
- 60" X 80" Queen Bed
- Laundry Center

Construction

- Norco NXG Frame
- Laminated, Aluminum Framed Floor
- Laminated, Aluminum Framed Sidewalls
- 3/4 Painted Fiberglass Front Cap w/ LED Strip Lights
- Azdel Composite Panels in place of Luan Plywood

- Full Walk On 3/8" Rood Decking
- Rubber Roof Membrane
- 5" Trusses w/ Interior Vault
- Lumber Core Cabinet Stiles
- Pocket Screwed Cabinet Stile Joints
- Mortise and Tenon Cabinet Doors

Popular Options

- 15K BTU Ducted A/C IPO 13.5K BTU
- 50 Amp Service, Wired and Prepped Second A/C
- Theater Seating
- Have it Your Way Dinette, Tri Fold, Theater Seating (1943RB only)



Check out the Northern Spirit Video



AZDEL
ONBOARD

NORTHERN SPIRIT

ULTRA LITE

RV/CARE/APPROVED



CAMPING SIMPLIFIED

Setting the Standard for Convenience

Coachmen Interactive Mobile Manuals

Download your Coachmen mobile app or visit our dynamic online manual to enhance your ownership experience. These interactive options provide incredible ease and insight into use, maintenance and enjoyment of your Coachmen product. Ranging from "How-To" videos, pictures and illustrations of various components, systems and features to fully searchable content and downloadable PDFs for individual component owner's manuals, answers are always just a click away.



423 N. Main Street • P.O. Box 30 • Middlebury, IN 46540
To learn more about Coachmen RV and our products and see how Coachmen is making the easy life easier, visit www.coachmenrv.com



Available Exclusively
at Authorized
RV Care Dealerships

24/7 EMERGENCY ROADSIDE ASSISTANCE WITH VEHICLE PURCHASE*

| | |
|---|--|
| <p>TOWING JUMP-STARTS TIRE CHANGES FLUID DELIVERY LOCKOUT SERVICE</p> | <p>WINCH-OUT MOBILE MECHANIC TECHNICAL SUPPORT DEALER LOCATOR SERVICES</p> |
|---|--|

VALID FOR 1 YEAR FROM DATE OF PURCHASE

Learn More
Scan this barcode using
a QR Reader on your
smart phone to learn
more about Forest River.

A Berkshire Hathaway company.

GVWR (Gross Vehicle Weight Rating) - is the maximum permissible weight of the unit when fully loaded. It includes all weights, inclusive of all fluids, cargo, optional equipment and accessories. For safety and product performance do NOT exceed the GVWR.

GAWR (Gross Axle Weight Rating) - is the maximum permissible weight, including cargo, fluids, optional equipment and accessories that can be safely supported by a combination of all axles.

UVW (Unloaded Vehicle Weight)* - is the typical weight of the unit as manufactured at the factory. It includes all weight at the unit's axle(s) and tongue or pin and LP Gas. The UVW does not include cargo, fresh potable water, additional optional equipment or dealer installed accessories.

*Estimated Average based on standard build optional equipment.

CCC (Cargo Carrying Capacity)** - is the amount of weight available for fresh potable water, cargo, additional optional equipment and accessories. CCC is equal to GVWR minus UVW. Available CCC should accommodate fresh potable water (8.3 lbs per gallon).

Before filling the fresh water tank, empty the black and gray tanks to provide for more cargo capacity.

**Estimated average based on standard build optional equipment.

Each Forest River RV is weighed at the manufacturing facility prior to shipping. A label identifying the unloaded vehicle weight of the actual unit and the cargo carrying capacity is applied to every Forest River RV prior to leaving our facilities. The load capacity of your unit is designated by weight, not by volume, so you cannot necessarily use all available space when loading your unit.

All information contained in this brochure is believed to be accurate at the time of publication. However, during the model year, it may be necessary to make revisions and Forest River, Inc., reserves the right to make all such changes without notice, including prices, colors, materials, equipment and specifications as well as the addition of new models and the discontinuance of models shown in this brochure. Therefore, please consult with your Forest River dealer and confirm the existence of any materials, design or specifications that are material to your purchase decision. ©2018 Northern Spirit by Coachmen, a Division of Forest River, Inc., a Berkshire Hathaway company. All Rights Reserved. 12/18

Your Northern Spirit Dealer



www.ForestRiverBuyLocal.com