

EcoFlow Power Kits

Simple, Smart, Compact



EcoFlow Power Kits

RV Power Made Easy

RV Power Revolution: From Complexity To Simplicity



- Heavy Installation & Cable Management
- Difficult Troubleshooting & Servicing
- Large Space Requirement

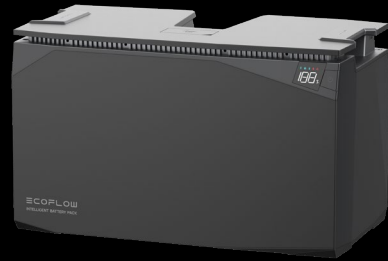


- At Least 60% Labor & Time Saving
- Easy Troubleshooting & Servicing
- Significant Space Saving

EcoFlow Power Kits are now available for North America market.



2kWh LFP Battery
\$1,749
UL1973, UN38.3



5kWh LFP Battery
\$3,999
UL1973, UN38.3



Power Hub
\$2,499
UL458, FCC



Power Kit Console
\$299
UL62368-1, FCC



AC/DC Distribution Panel
\$399
UL1012, FCC



AC Charge Cable
\$99
15ft, 10 AWG



AC Main Out Cable
\$99
15ft, 10 AWG



LFP Battery Cable
\$99
5ft, 4 AWG



Alternator Charge Cable
\$139
20ft, 6 AWG



DC Main Out Cable
\$139
15ft, 6 AWG



Solar Charge Cable
\$69
20ft, 10 AWG

System Summary

- Power Output Capacity
 - AC Output: 120V 3600W
 - DC Output: 13.6V 70A or 26.4V 60A
- Battery Capacity
 - 2kWh Battery: 51.2V 40Ah, 2048Wh
 - 5kWh Battery: 51.2V 100Ah, 5120Wh
- Dimension & Weight
 - Power Hub: 11.8 X 18.9 X 5.5 in, 31 lbs
 - 2kWh Battery: 11.2 x 13.7 x 7.8 in, 37.7 lbs
 - 5kWh Battery: 11.8 x 19.7 x 10.2 in, 89.5 lbs
 - Power Kit Console: 4.5 X 8 X 0.9 in, 1 lb
 - AC/DC Smart Distribution Panel:
8.3 X 13.9 X 3.9 in, 5.8 lbs



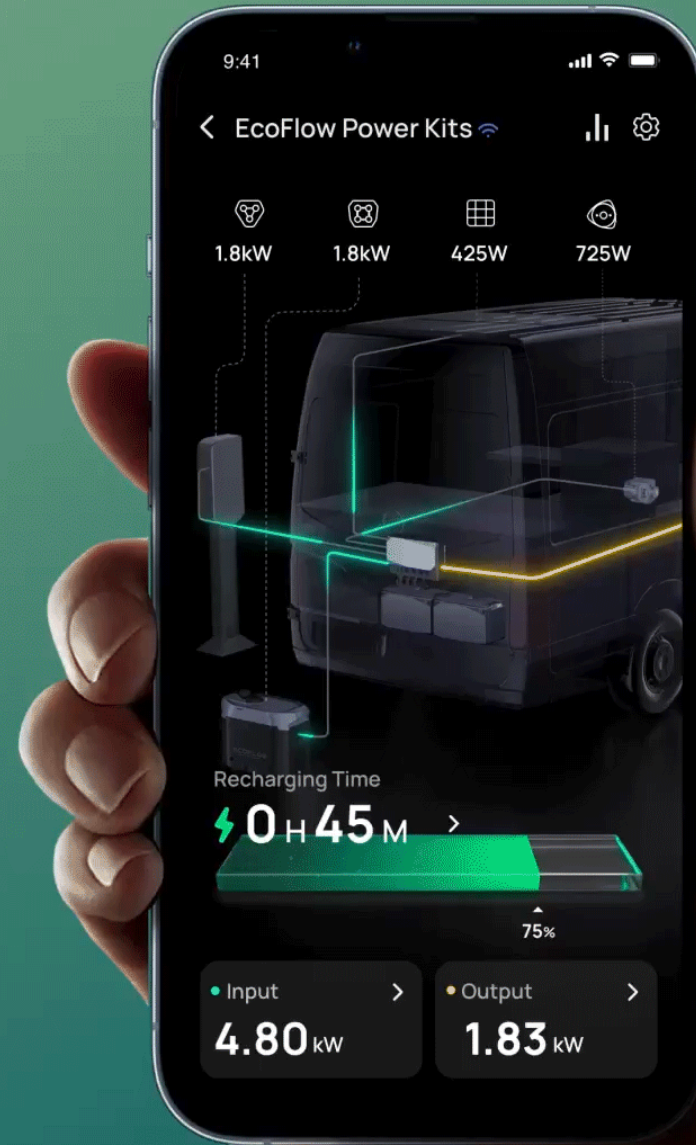
Fast & Multiple Charging Methods

- Charge Input Options:
 - Shore Power
 - Generator
 - Solar (prioritized)
 - Alternator
- Max. 3000W AC Charge Input (shore power / generator)
 - AC Input Port x 1
- Max. 4800W DC Charge Input (solar / alternator)
 - Solar / Alternator Input Port x 3
- Max. 6000W Total Charge Input (AC input + DC input)



Smart Control

- CAN Communication
- Compatible with RV-C, SAE J-1939
- EcoFlow APP (remote control)
- Power Kit Console (wired control)



Expandable Power

- Single Power Hub:
 - 3600W 120V AC Output
 - 2 - 15 kWh Energy Capacity (up to 3 batteries)
- Dual Power Hubs:
 - 7200W 120/240V AC Output
 - 2 - 30 kWh Energy Capacity (up to 6 batteries)



Power Hub

DC Main Output: 13.6V 70A or 26.4V 60A

AC Main Output: 120V 50Hz/60Hz, 3600W (7200W Peak) (3000W @

Battery Voltage < 49V)

Auxiliary AC Outlet: 120V 20A

Total Input Power: max.6000W

AC Input Power: 100~120V 50Hz/60Hz, max.30A, 3000W

Alternator Input Power

Port 1: 13~60V 70A, max.1600W

Port 2 & 3: 13~60V 30A, max.1600W each, 4800W total

Solar Input Power

Port 1 & 2 & 3: 15~60V 30A, max.1600W each, 4800W total

Dimension (HWD): 11.8 X 18.9 X 5.5 in

Operating Temperature: -13°F to 140°F

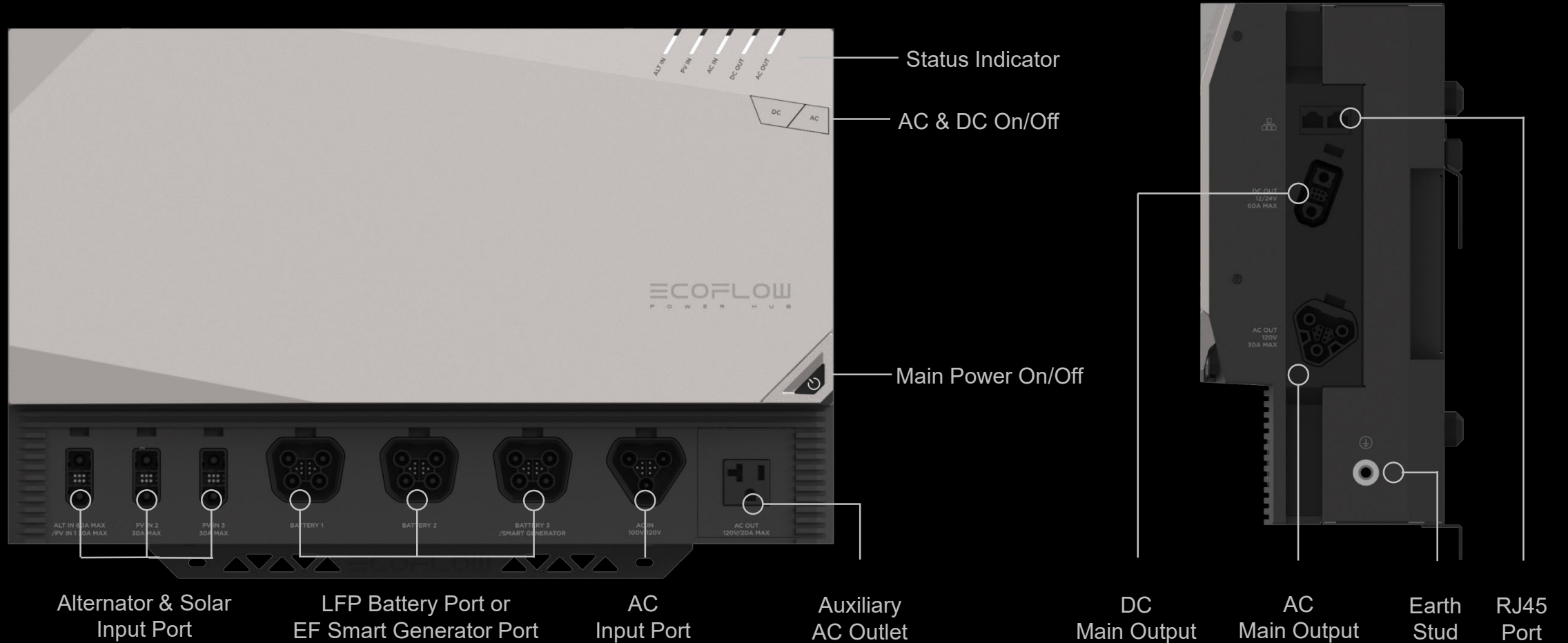
Net Weight: 31 lbs

Compliance: UL1012, UL1741, UL1778, UL458, FCC

Warranty: 5 years



Power Hub - Exterior



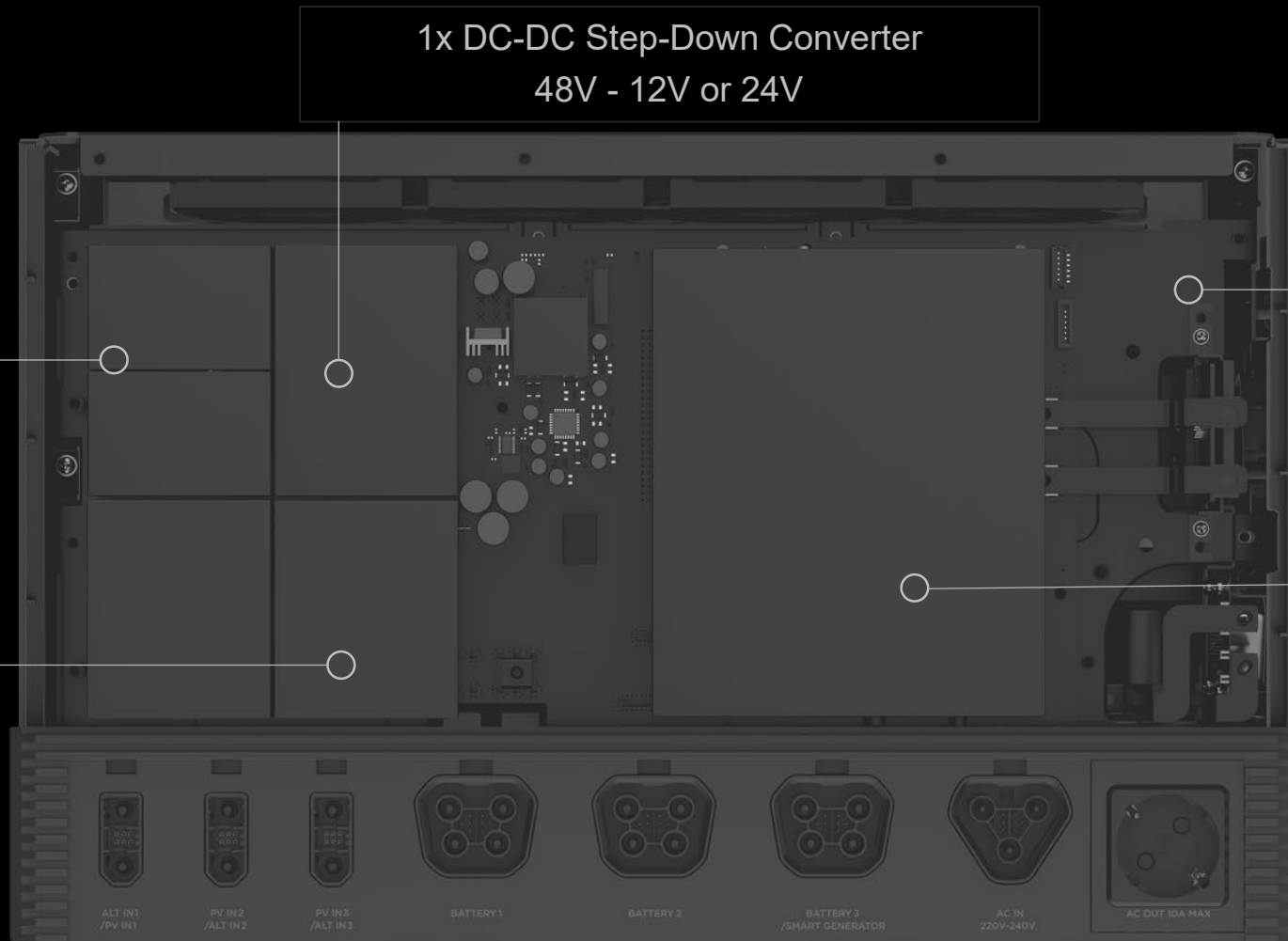
Power Hub - Interior

1x DC-DC Step-Down Converter
48V - 12V or 24V

IOT Module
BT & Wi-Fi

3x DC-DC / MPPT
Dual Purpose
Battery Charger

1x 48V Inverter / Charger
By-pass, EPS,
X-Boost, X-Stream



ALT IN1
/PV IN1

PV IN2
/ALT IN2

PV IN3
/ALT IN3

BATTERY 1

BATTERY 2

BATTERY 3
/SMART GENERATOR

AC IN
220V-240V

AC OUT 10A MAX

2kWh & 5kWh LFP Battery

Chemistry: Lithium Iron Phosphate

Capacity: 51.2V, 40Ah (2kWh) & 100Ah (5kWh)

3000 (2kWh) & 3500 (5kWh) Cycles @ 80% DOD

Built-in BMS and Fuse: 100A (2kWh) & 125A (5kWh)

Waterproof Battery Switch and LCD Status Indicator

Battery Self-Heating for Cold Environment Operation

Advanced Battery Algorithm and Safety Protections

Work with other 48V Power Systems via LFP Battery Polarity Adapter

Dimension (HWD): 11.2 x 13.7 x 7.8 in (2kWh) &

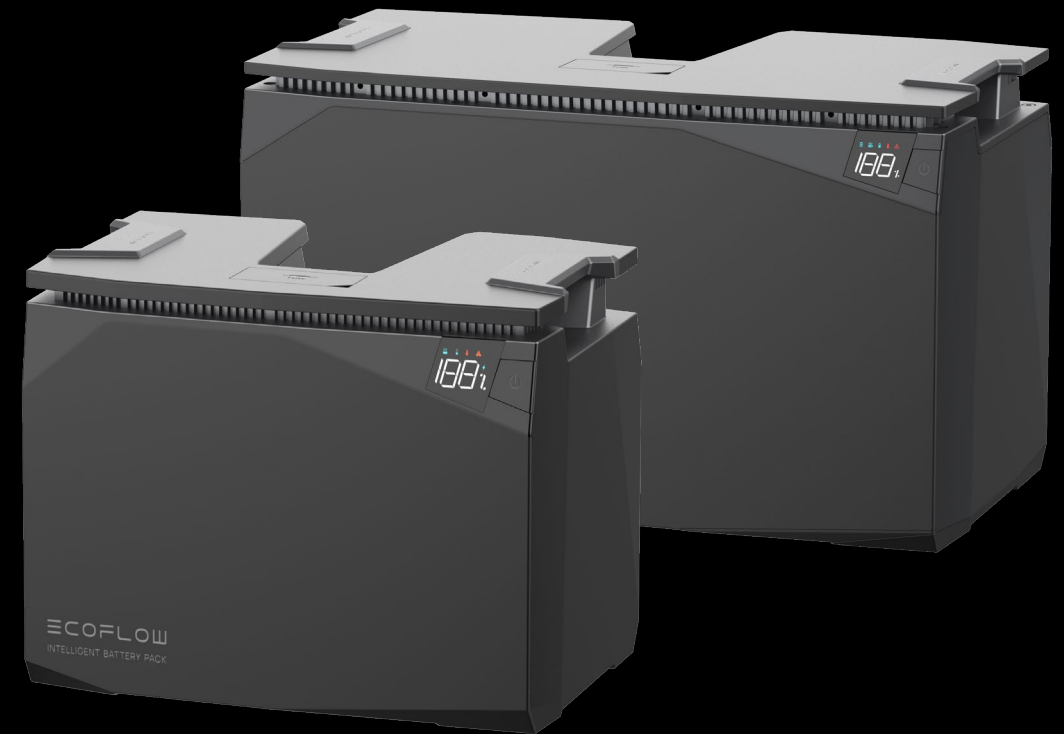
11.8 x 19.7 x 10.2 in (5kWh)

Operating Temperature: -4°F to 122°F

Net Weight: 37.7 lbs (2kWh) & 89.5 lbs (5kWh)

Compliance: UL1973, FCC, UN38.3, IP54

Warranty: 5 years



Power Kit Console

Screen: 7-Inch (Diagonal) IPS Touch Screen

Communication: CAN Bus (RJ-45)

Mounting Bracket Included

Intuitive Control & High-Speed Display

Controls Power Kits System On/Off

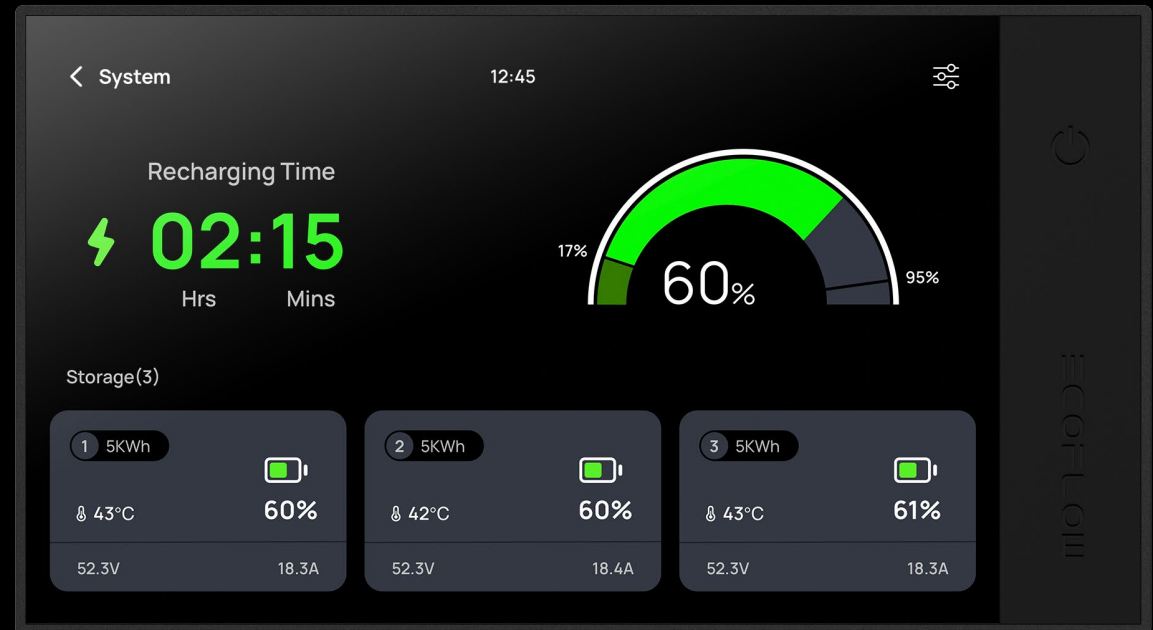
Dimension (HWD): 4.5 X 8 X 0.9 in

Operating Temperature: -4°F to 122°F

Net Weight: 1 lb

Compliance: UL62368-1, FCC

Warranty: 5 years



AC/DC Smart Distribution Panel

DC Main Input: 10~30V, max.70A

AC Main Input: : 100~120V, max.30A

DC Output: 6 x controllable circuits + 6 regular circuits, 10~30V,
max.20A each circuit

AC Output: 6 x circuits (circuit 1~2: 30A, circuit 3~6: 20A), 100~120V

Capture Real-Time Load Data from Each AC & DC Circuit for
Smart Load Management

Dimensions (HWD): 8.3 X 13.9 X 3.9 in

Operating Temperature: -13°F to 113°F

Net Weight: 5.8 lbs

Compliance: UL1012, FCC, IP21

Warranty: 5 years



Power Kit Cables



AC Charge Cable

Cable Length: 15ft
Wire Gauge: 10 AWG
Function: Power Hub to
AC Power Source



AC Main Out Cable

Cable Length: 15ft
Wire Gauge: 10 AWG
Function: Power Hub to
AC Load Center



LFP Battery Cable

Cable Length: 5ft
Wire Gauge: 4 AWG
Function: LFP Battery to
Power Hub



Alternator Charge Cable

Cable Length: 20ft
Wire Gauge: 6 AWG
Function: Power Hub to
Starter Battery or Alternator



DC Main Out Cable

Cable Length: 15ft
Wire Gauge: 6 AWG
Function: Power Hub to
DC Load Center

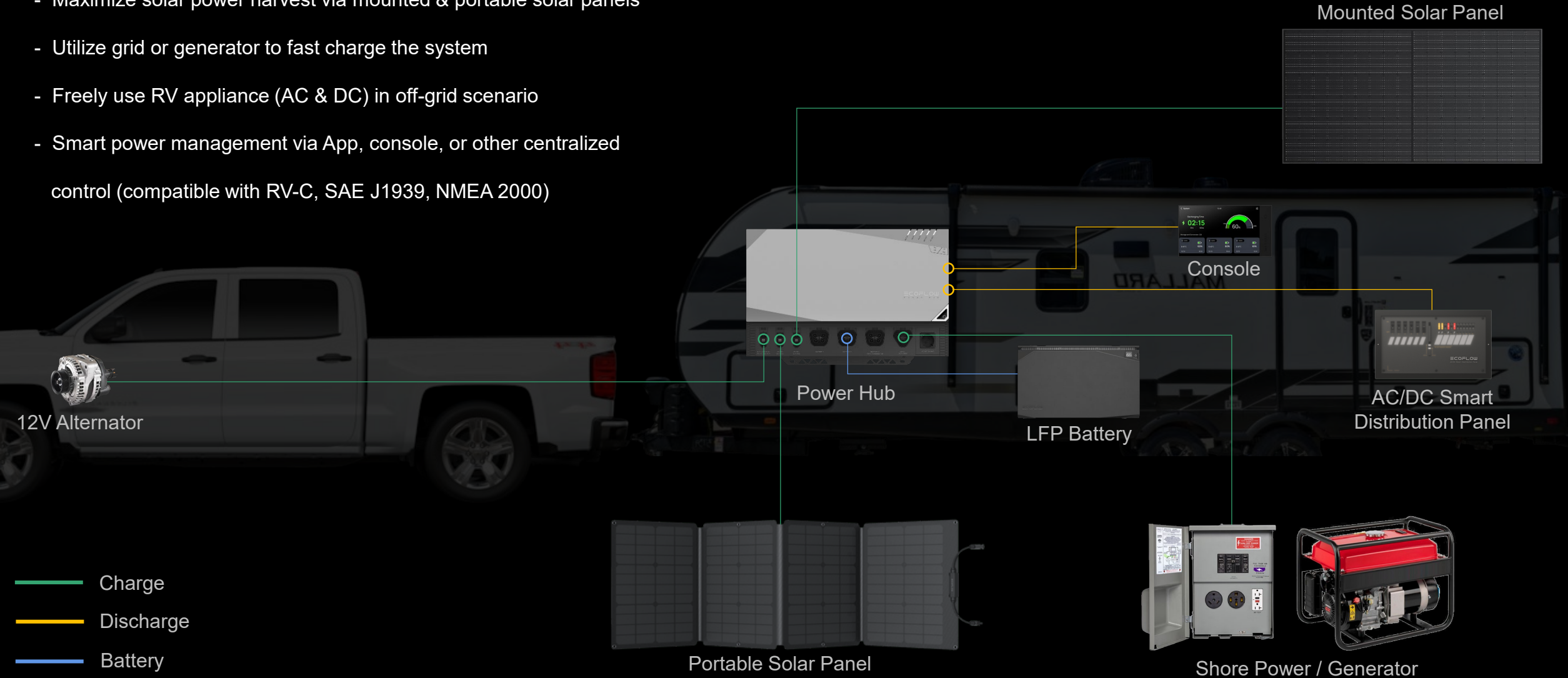


Solar Charge Cable

Cable Length: 20ft
Wire Gauge: 10 AWG
Function: Power Hub to
Solar Panel

Power Kits Application - Travel Trailers & Fifth Wheels

- Charge via 12V stock alternator while moving
- Maximize solar power harvest via mounted & portable solar panels
- Utilize grid or generator to fast charge the system
- Freely use RV appliance (AC & DC) in off-grid scenario
- Smart power management via App, console, or other centralized control (compatible with RV-C, SAE J1939, NMEA 2000)

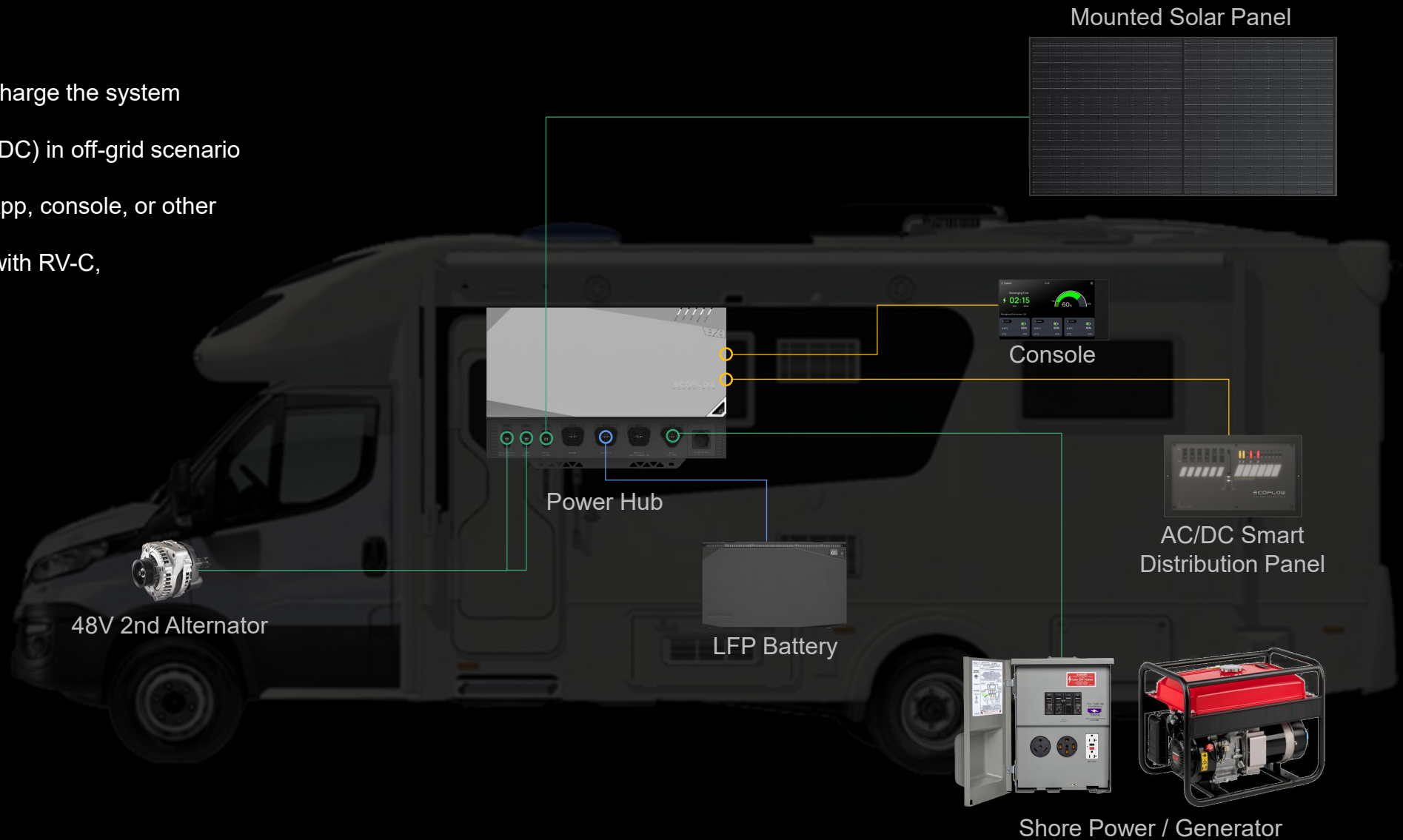


Power Kits Application - Camper Vans & Motorhomes

- Charge via 12V stock alternator or rapid charge via 48V

2nd alternator while moving

- Utilize grid or generator to fast charge the system
- Freely use RV appliance (AC & DC) in off-grid scenario
- Smart power management via App, console, or other centralized control (compatible with RV-C, SAE J1939, NMEA 2000)



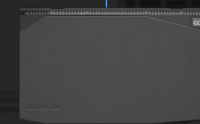
Mounted Solar Panel



Console



Power Hub



LFP Battery



AC/DC Smart
Distribution Panel

48V 2nd Alternator



Shore Power / Generator

Charge

Discharge

Battery