

MIRADA
BY COACHMEN

MIRADA
BY COACHMEN

CHOOSE ADVENTURE.
CHOOSE FREEDOM.
CHOOSE MIRADA.





Exterior Color Selections



Partial Paint with Vinyl Graphics



Full-Body Paint - Savanna



Full-Body Paint - Sandy Oak

New exterior graphics, including a redesigned partial paint design and two full-body paint designs to make you stand out on the road.



CHOOSE MIRADA FOR YOUR NEXT ADVENTURE.

There's something special about the people who have a passion for travel. We share it with you. So we've equipped the Mirada with more standard features than ever, so you can enjoy your next adventure in unparalleled style. Make no mistake, though: The Mirada is more than just a pretty machine. It's both beautiful and tough. With floorplans that feature either a 20,500-lb. or 22,000-lb. chassis, you can count on unparalleled durability and strength.

The new Mirada comes with a new suite of standard features, which means more convenience, value, and comfort for you:

- New 31FW floorplan offers unbelievable storage, including a pantry, spacious closet, and more open space than ever.
- External pass-through storage allows for storage of larger items.
- A back-up monitor with side cameras so you can quickly and easily check your blind spots.
- Power heated mirrors fight frost and ensure visibility, even in difficult winter conditions.
- A lightweight Treadlite power entrance step offers unmatched strength and durability.
- A crowned, laminated fiberglass roof that's easier to clean and more durable than standard roofing material.



FEEL AT HOME, WHEREVER YOU HAPPEN TO BE.

Every adventurer needs a comfortable place to recharge. With the Mirada, you'll end your day feeling right at home, no matter where you are. That's because our interiors are designed for your comfort—and your convenience.

Whether it's the bedroom, the bath, or the galley, you'll find all your favorite amenities. And that includes entertainment, from high-definition flat-screen TVs to crystal-clear Bluetooth radio. Spend a little time relaxing in the Mirada, and you'll wonder why you didn't get one sooner.

*Mirada 35BH with Sugar Maple décor and Honey Glazed Maple cabinets shown in all photos.

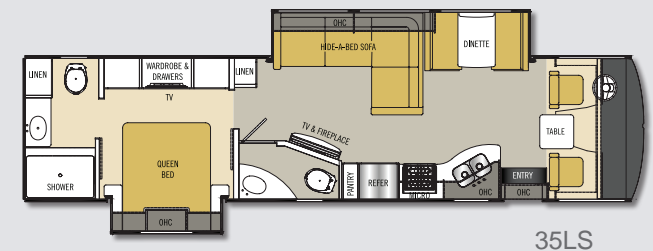
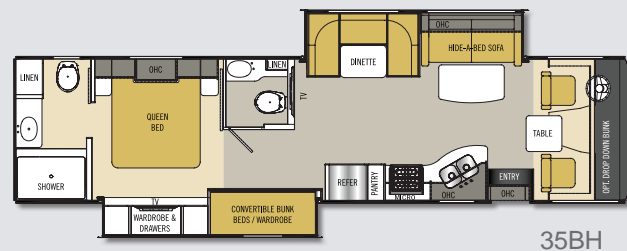
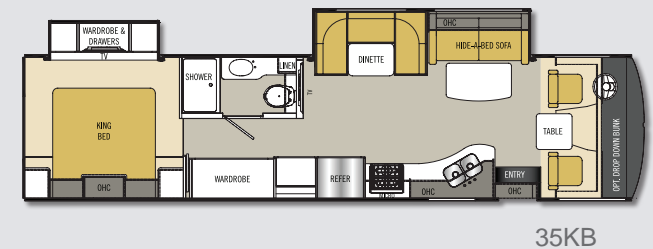
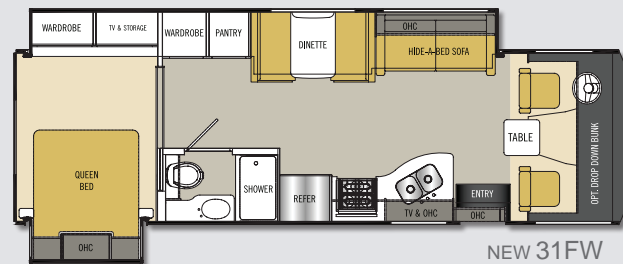
This year's model features more standard features than ever before, offering more bang for your buck and a better overall experience:

- The 35KB comes with stackable washer/dryer prep, a king bed, and an outdoor kitchen with gas grill.
- A KING Jack TV antenna means clearer reception in more places.
- The kitchen includes a large double-door refrigerator, a double-bowl stainless steel sink, and solid surface countertops with flush sink and stove covers for more working space.
- Enjoy the warm glow of long-lasting, energy efficient LED lighting throughout the interior.
- Solar privacy shades throughout the Mirada provide discretion and help keep you cool.
- The passenger seat computer workstation includes USB, 12-volt, and 110 power sources.



More bang, less buck.

- Relax at night with an upgraded, Serta pillow-top mattress and a 32" LCD television with DVD player in the bedroom.
- Get flexible storage and sleeping space with the convertible bunk/wardrobe (35BH only). Bunks include TVs with DVD players.
- The dual 13,500 BTU ducted roof air conditioners keep things cool inside even on the hottest days.
- Durable diamond-plate black rubber flooring in the driver's area makes for easy upkeep.
- Keep comfortable on long drives with the reclining/swivel pilot and co-pilot seats.



STANDARD FEATURES

INTERIOR APPOINTMENTS

Bismark Fawn Wall Board – Coach
Glo Pecan Wall Board – Accent
Solid Surface Kitchen Countertop
Moab Trekk Linoleum
Antique Nickel Hardware
Hardwood Cab Doors/Raised Panel
Overhead Doors
Ball-Bearing Drawer Guides Throughout
Frameless Tinted Windows w/Safety Glass
Reclining/Swivel Pilot Seats
Visionary Sofa Hide-A-Bed
L-Shape Sofa Lounge w/Visionary (35LS only)
Solar Privacy Shades Throughout
Easy-Clean Cockpit Floor
Power Windshield Shade w/Manual Side Shade

INTERIOR EQUIPMENT

Radio AM/FM/Bluetooth
Satellite Prep Wire to Roof
Cable TV Jack
LP Leak Alarm and Smoke Detector
Carbon Monoxide Detector
Fire Extinguisher
KING Jack TV Antenna
39" LCD TV Coach (N/A 31FW)
32" LCD TV Galley (31FW Only)
DVD Player in Living Room & Bedroom
Dream Dinette (31FW & 35LS)
Horseshoe Booth Dinette (35BH & 35KB)
Fireplace Electric (35LS Only)
13" TV w/DVD player in Each Bunk (35BH Only)

GALLEY

8 Cu. Ft. Double-Door Refrigerator
High-Rise Kitchen Faucet
Double-Bowl Stainless Kitchen Sink
Flush-Mounted 3-Burner Range w/Oven
Solid Surface Range and Sink Covers

30" OTR Microwave Oven
Pull-Out Pantry with Counter Top (N/A 31FW & 35KB)
Thermofoil Backsplash

BATH AND WATER

Stainless Lav. Sink
Porcelain Toilet w/Foot Flush
One Piece ABS Shower Surround
Glass Shower Door
Power Bath Vent
6-Gallon (Gas/ELEC) D.S.I. Water Heater
Demand Water Pump
Skylight Over Shower
Stackable Washer/Dryer Prep (35KB Only)
Whole Coach Water Filter (EXC. CSA)

SLEEPING

Queen Bed 60" X 74" (N/A 35KB)
King Bed 70" X 75" (35KB)
Bunk Beds Convert to Wardrobe (35BH)
Upgraded Mattress
Bedspread and Pillows w/Shams
Designer Headboard (N/A 35BH & 35LS)
32" LCD TV in Bedroom

ELECTRICAL/HEATING/AC

30' 50-Amp Power Cord
55-Amp, 110/12-Volt Power Converter
GFI Circuit
Outside Recept (DS)
Emergency Start Switch
Lighted Trunk Boxes
Patio Light
30,000 BTU E.I. Furnace
13,500 BTU Roof Air Conditioner – Ducted
2nd 13,500 BTU Roof AC
Dual Coach Batteries
5.5 Onan Generator
Coach Command Center

AUTOMOTIVE/EXTERIOR

Auxiliary Dash Fans
Tilt Steering Wheel
Cruise Control
Intermittent Wipers
Dash Air Conditioning
19.5 Radial Tires
Rear Mud Flaps Only
Power Entrance Step – Double
Crowned, Laminated Fiberglass Roof
Full Basement w/Pass-Through Storage
Radius Trunk Doors w/Slam Latch
High-Gloss Taupe Sidewalls
Fiberglass Front Cap & Rear Cap
Dead Bolt Lock – Entrance Door
26" Radius Entry Door
Power Patio Awning
5,000-lb. Towing Hitch w/7-Way Plug
Back Up Monitor w/Side Cameras
Rear-Mounted Roof Ladder
Power Heated Mirror
Stainless Steel Wheel Liners
Automatic Levelling Jacks
Slide-Out Room Awnings
20-Gallon LP Tank
Valve Stem Extenders
Exterior Kitchen (35KB Only)
Round Cockpit Pedestal Table
Computer Work Station at Passenger Seat

EXTERIOR KITCHEN

Outdoor kitchen includes a refrigerator, sink, portable gas grill, grill stand, and propane hookup.

OPTIONAL FEATURES

Power Drop-Down Front Bunk Bed (N/A35LS)
Stainless Steel Appliance Package
Dual-Pane Windows
15,000 BTU A/C w/Heat Pump Front
15,000 BTU A/C w/Heat Pump Rear
32" LCD TV Galley Overhead Cabinet (35BH 35KB Only)
Outside Entertainment Center w/32" TV & DVD
Diamond Shield – (Required with Full Paint)
CSA Upfit
① CD-MVSA (Canadian Motor Vehicle Safety Act)
Travel Easy Roadside Assistance – Provided by Coach-Net

Notes:

① Mandatory for All Canadian Provinces

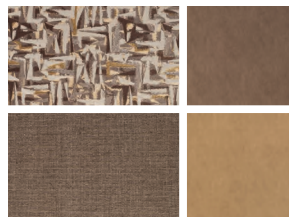
Stainless Appliance Package

Stainless Residential Refrigerator
Stainless OTR Microwave
17" Stainless Range/Oven
1,000 Watt Inverter w/2 Six-Volt Batteries

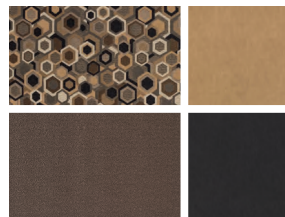
Interior Decor Color Selections



Ridge Manor



Sugar Maple



Midnight Cream

Interior Wood Color Selections



Spiced Maple



Honey Glazed Maple



FREE One-Year Membership – Coachmen Owners Association!

Coachmen is proud to sponsor the largest manufacturer-sponsored camping club in North America ... Coachmen Owners Association (COA). COA provides you a world of ways to enjoy your RV. This is **FUN ON OVERDRIVE** and provides: Free Trip Routing, Exciting Tours & Rallies, Free Campground Directory, Local/State Club Activities, Easy RVing Magazine Free, Theme

Park Discounts, Fuel Discounts, Free onebigplanet® Memberships with discounts at 180,000 merchants, and Much More!

Every new Coachmen RV buyer is eligible for a 1-Year FREE membership in the Coachmen Owners Association. It all adds up to an easy ownership experience!

SPECIFICATIONS

CLASS A GAS	31FW	35BH	35LS	35KB
2016 FORD ENGINE V-10 6.8L 3-Valve*	320 HP/460 TRQ	320 HP/460 TRQ	320 HP/460 TRQ	320 HP/460 TRQ
WHEELBASE	190"	242"	242"	242"
GVWR	20,500 lbs	22,000 lbs	22,000 lbs	22,000 lbs
GCWR	26,000	26,000	26,000	26,000
FUEL CAPACITY	80 gal	80 gal	80 gal	80 gal
LP GAS CAPACITY (gallons)	20 gal	20 gal	20 gal	20 gal
FURNACE (BTUs)	30,000	30,000	30,000	30,000
EXTERIOR LENGTH (w/o ladder)	31' 0"	36' 10"	36' 10"	36' 10"
EXTERIOR HEIGHT (with AC)	12' 5"	12' 5"	12' 5"	12' 5"
EXTERIOR WIDTH	102"	102"	102"	102"
FRESH WATER	70 gal	70 gal	70 gal	70 gal
GREY WATER	45 gal	45/45 gal	45 gal	45 gal
BLACK WATER	45 gal	45/45 gal	45/45 gal	45 gal
WATER HEATER	6 gal	6 gal	6 gal	6 gal
AWNING SIZE	17'	12'	18'	26'

*2015 FORD ENGINE V-10 6.8L 3-Valve 362 HP/457 TRQ

GVWR (Gross Vehicle Weight Rating): The maximum permissible weight of the unit, including the unloaded vehicle weight (UVW) plus all fluids, cargo, optional equipment, and accessories. For safety and product performance, do not exceed the GVWR.

GCWR (Gross Combined Weight Rating): The maximum total weight of the loaded unit, plus a tow vehicle. This includes the weight of both the unit and tow vehicle, fuel for each, all other fluids, cargo, occupants, optional equipment, and accessories.

Important Note: All capacities are approximate, and all dimensions are nominal. Coachmen motorhomes are designed to allow for a wide variety of uses, extended trips with two people, or short trips with multiple people. Accordingly, each unit allows ample room for sleeping, seating, fluids, and cargo. While the customer is the beneficiary of this design, the customer also bears the responsibility to select the proper combination of passengers, cargo, load, and tow vehicle without exceeding the chassis weight capabilities. Consumer may need additional braking capacity to tow loads greater than 1,000 pounds.

Seat belts should always be worn for passenger safety. Seat belts are provided at most locations to allow convenience in selecting which

seat to occupy. However, it is not intended that all seating positions equipped with a seat belt may be occupied while the vehicle is in motion, without regard to other weight factors.

All Coachmen motorhomes are designed to ensure that the number of passengers allowed while the vehicle is in motion will always at least equal the stated sleeping capacity. Though extra seat belts may be provided, for your safety and the proper operation of your vehicle, limit your passengers to the number allowed by the Net Carrying Capacity of your vehicle.

All information contained in this brochure is believed to be accurate at the time of publication. However, during the model year, it may be necessary to make revisions and Coachmen reserves the right to make all such changes without notice, including prices, colors, materials, equipment, and specifications as well as the addition of new models and the discontinuance of models shown in this brochure. Therefore, please consult with your Coachmen dealer and confirm the existence of any materials, design, or specifications that are material to your purchase decision.

© Copyright 2016 Coachmen RV a Division of Forest River, Inc. – All Rights Reserved



Forest River, Inc. encourages our customers to purchase their Forest River products from a local dealership whenever possible because of the following reasons:

1. Forest River, Inc. dealers are independently owned and operated businesses, so priority service and scheduling is at their discretion and is often provided to customers that purchased their unit at that dealership.
2. Purchasing locally allows customers to establish meaningful relationships with a dealer, enhancing the RV experience through assistance with product questions, user tips or RV regulations for your state or country, and much more!
3. Canadian customers must meet requirements to bring an RV purchased out of the country to their home. These requirements may involve additional inspections and certifications, taxes, and fees. Your local Canadian dealer is a professional at meeting these requirements.
4. Scheduling timely warranty repairs and adjustments through a local dealership provides far greater flexibility and convenience to you, the customer!

It is the goal of Forest River, Inc. that all of our RV owners fully enjoy the RV experience and that customer satisfaction meets or exceeds their expectations!



Travel Easy™ Roadside Assistance!

RVing is easier with Coachmen's Travel Easy™ Roadside Assistance provided FREE the first year of ownership to those who purchase a New Coachmen RV. Administered by Coach-Net, this service provides you with 24/7 operational, technical and emergency road service coverage. Also included is towing, fuel delivery, jump starts, lockout service, tire changes, mobile mechanic, and unlimited technical assistance. Anywhere. Anytime. Travel Easy™ is the security of knowing that help is an easy phone call away.



Coachmen RV, a Division of Forest River, Inc.,
A Berkshire Hathaway Company
423 N. Main St., P.O. Box 30, Middlebury, IN 46540

To learn more about Coachmen RV and our products and see how Coachmen is making the easy life easier, visit www.coachmenrv.com.



Learn More
Scan this barcode using
a QR Reader on your
smart phone to learn
more about Forest River.

