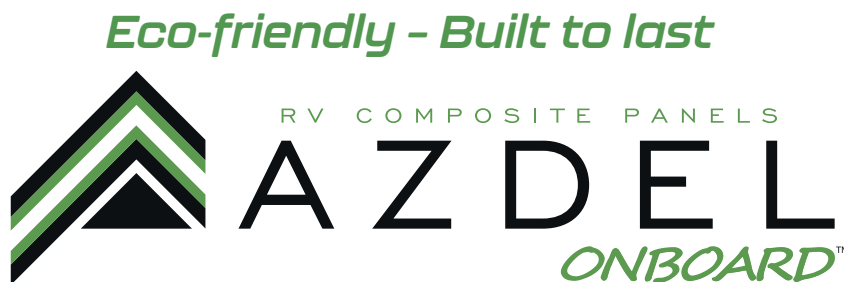


# APEX

LIGHTWEIGHT • EASY TO TOW

PERFECT FOR SMALLER TOW VEHICLES

Designed for towing by today's half-ton trucks, minivans and SUVs. All units are available under 4,000 lbs. in 19' - 26' lengths.

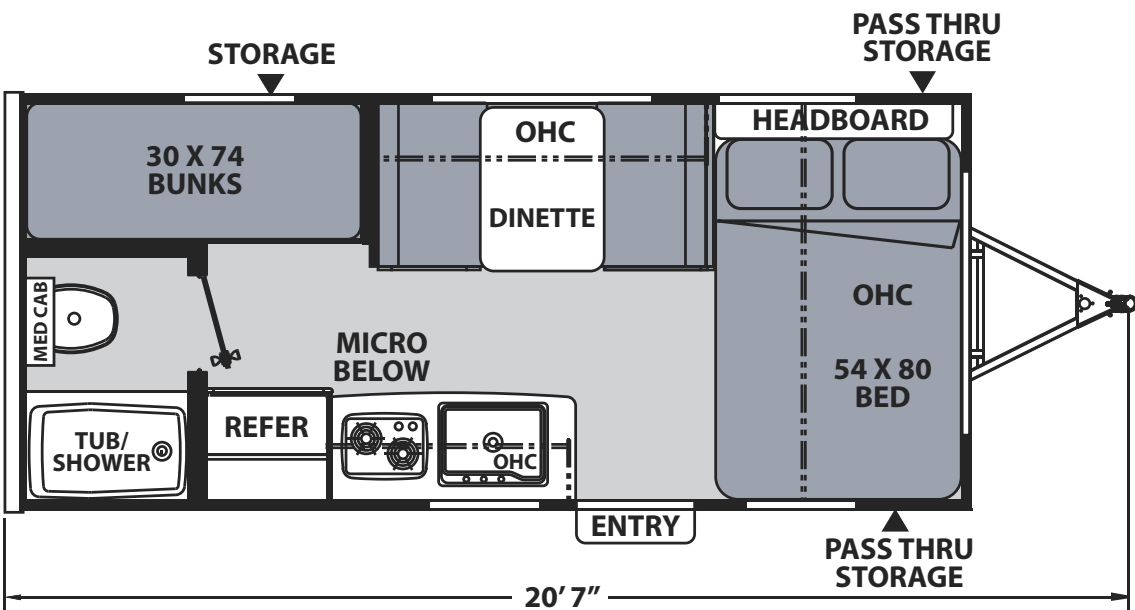


NANO

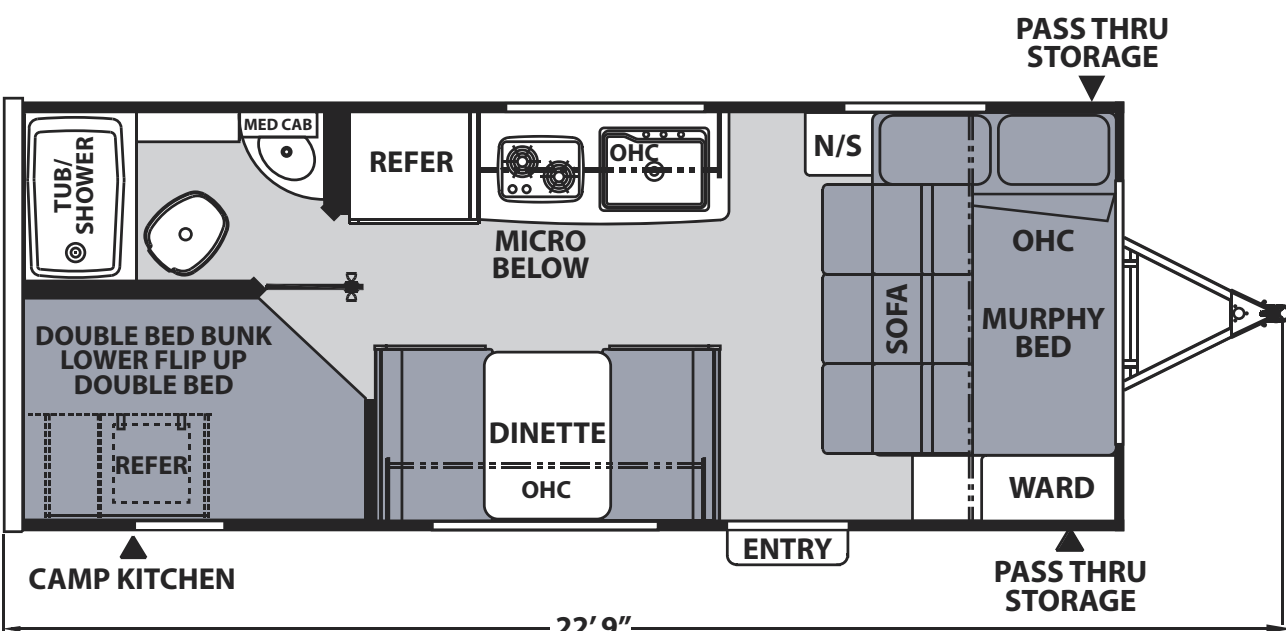


REMOTE

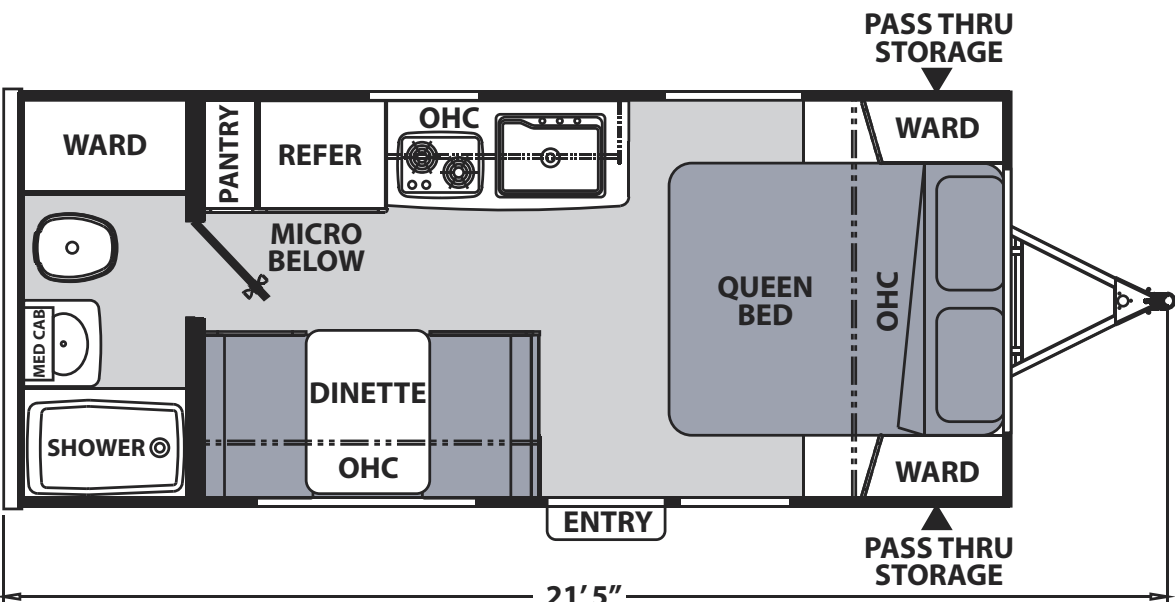
NANO TRAVEL TRAILERS



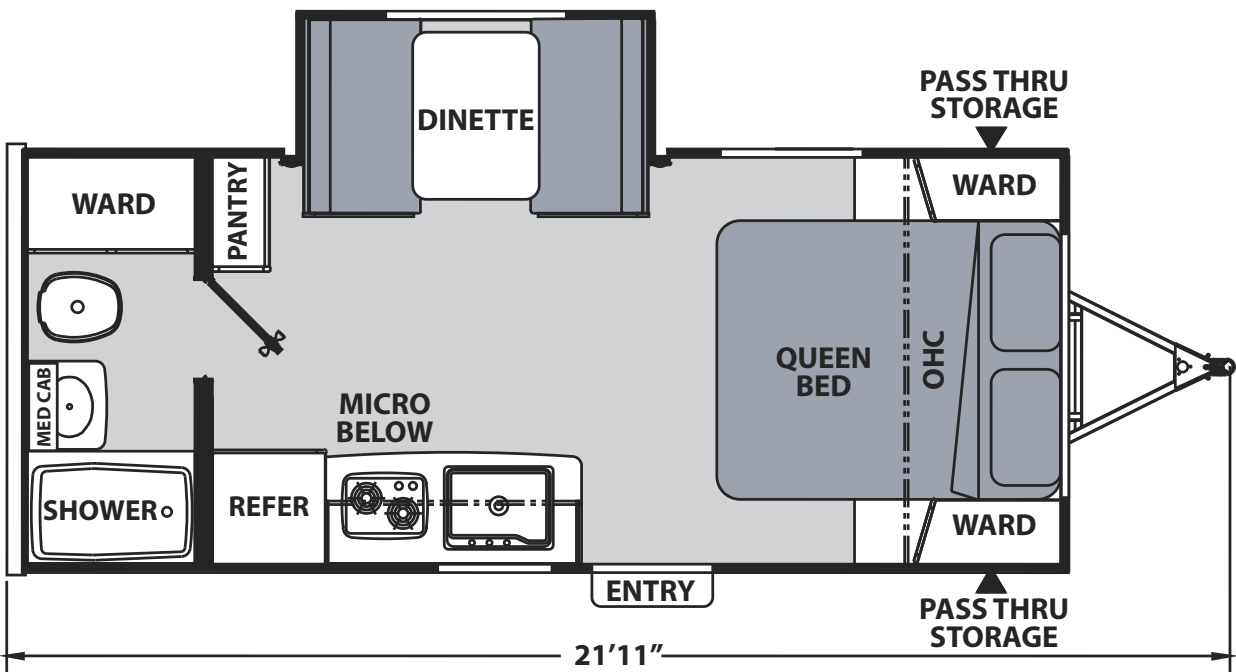
185 BH



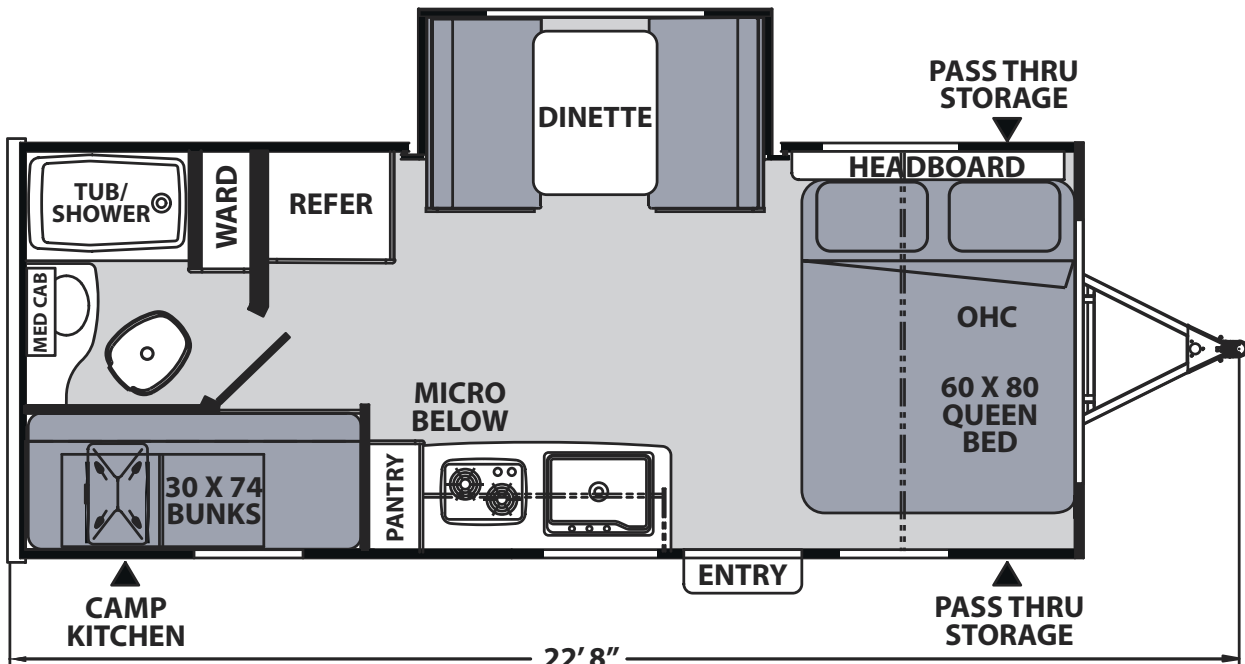
186 BH



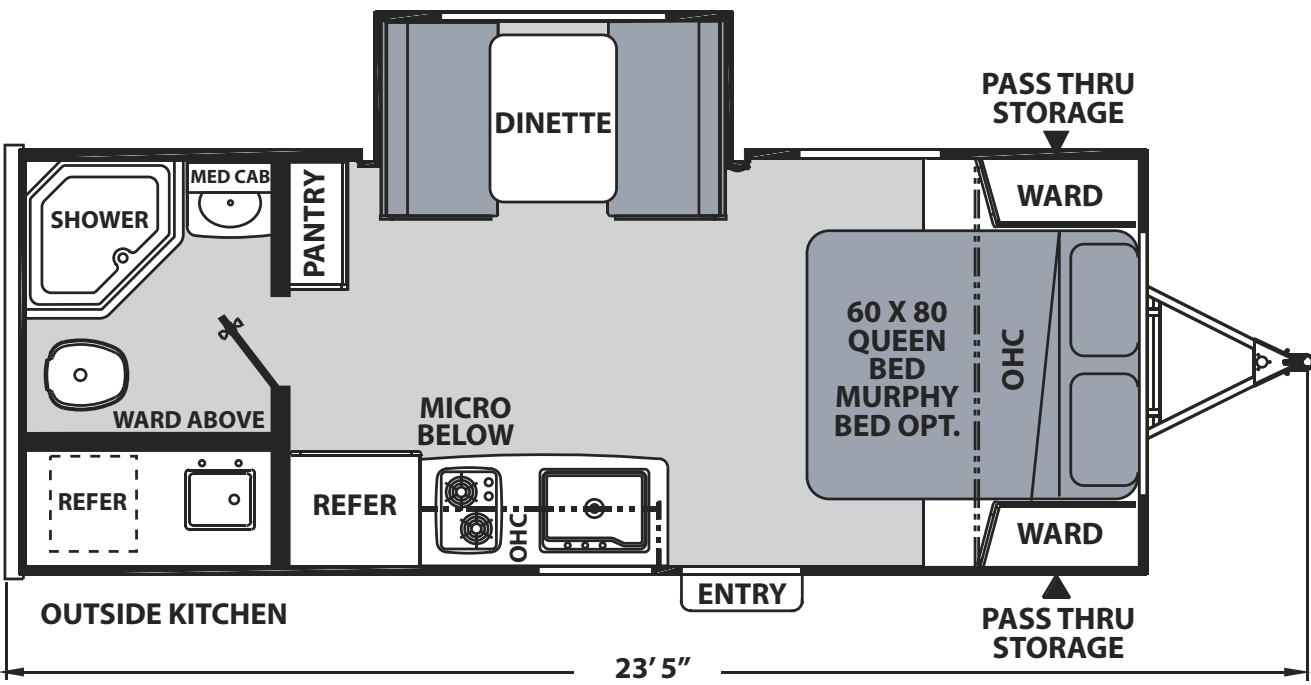
187 RB



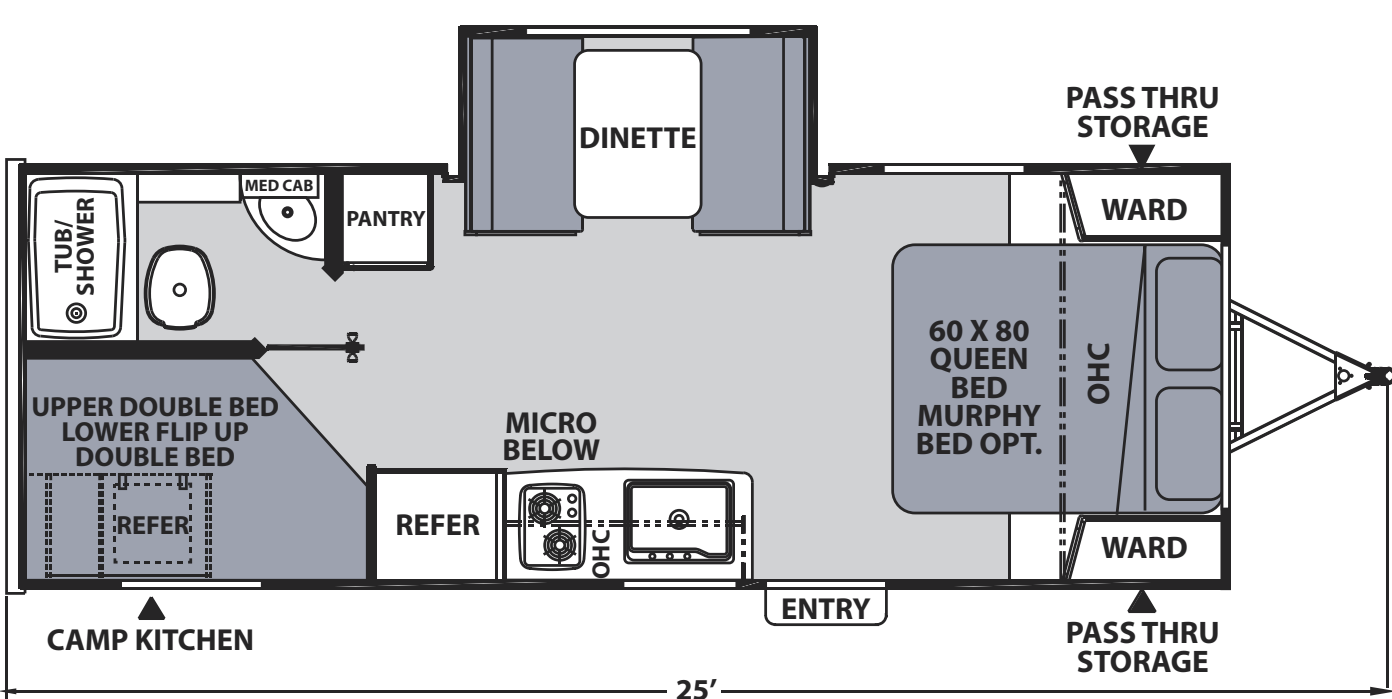
191 RBS



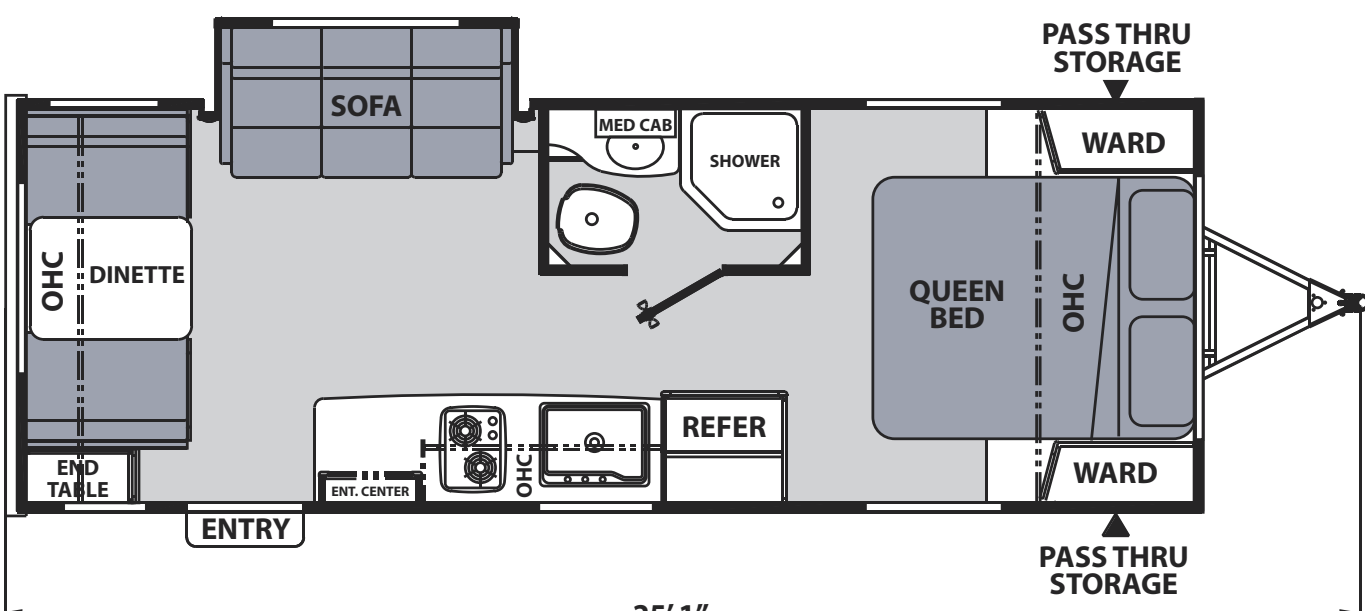
194 BHS



203 RBK

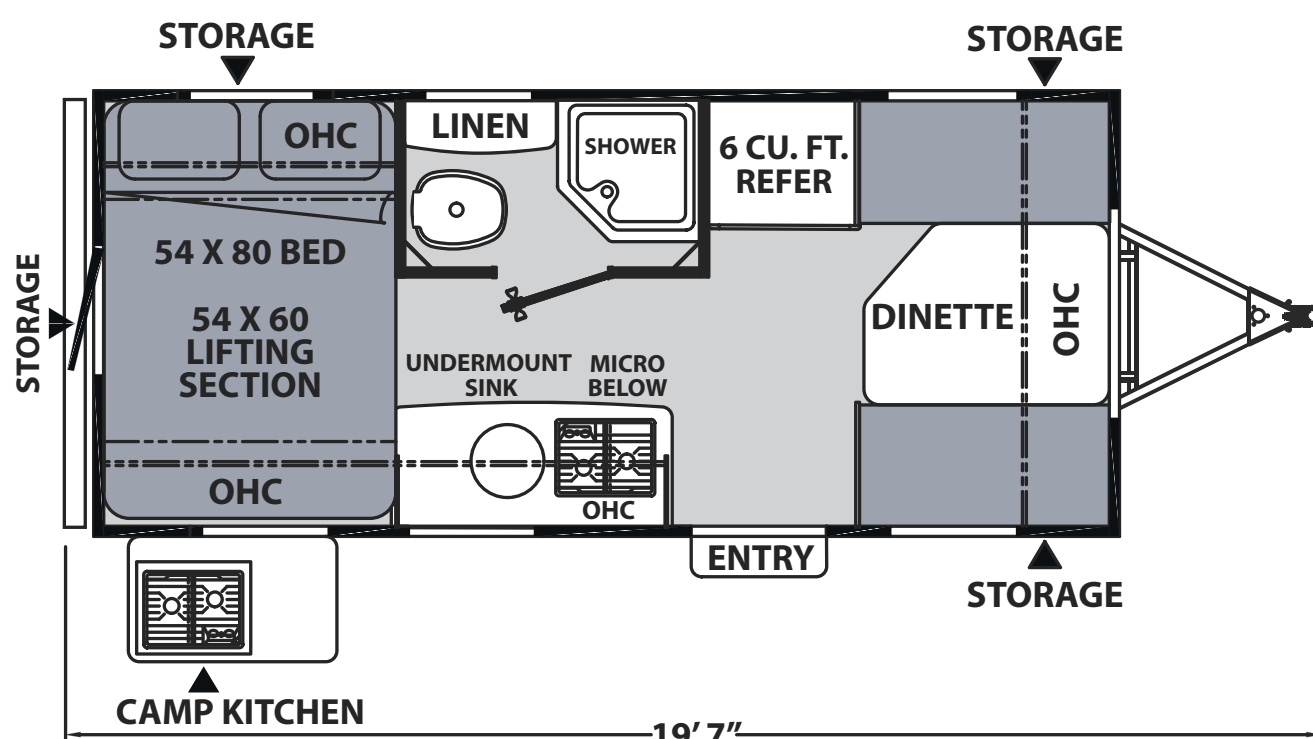


208 BHS



213 RDS

REMOTE TRAVEL TRAILER



16 R

Remote	16 R
Hitch Weight (lbs.)	330
Carrying Capacity (lbs.)	940
UVW (lbs.)	2,860
GVWR (lbs.)	3,800
Ext. Length (Bumper to Hitch)	19' 7"
Ext. Height (Incl. A/C)	9' 10"
Int. Height (Coach)	77"
Awning Length	12'
Fresh Water Capacity (gal.)	50
Grey Water Capacity (gal.)	35
Waste Water Capacity (gal.)	35

GVWR (Gross Vehicle Weight Rating) - is the maximum permissible weight of the unit when fully loaded. It includes all weights, inclusive of all fluids, cargo, optional equipment and accessories. For safety and product performance do NOT exceed the GVWR.

GAWR (Gross Axle Weight Rating) - is the maximum permissible weight, including cargo, fluids, optional equipment and accessories that can be safely supported by a combination of all axles.

UVW (Unloaded Vehicle Weight)\* - is the typical weight of the unit as manufactured at the factory. It includes all weight at the unit's axle(s) and tongue or pin and LP Gas. The UVW does not include cargo, fresh potable water, additional optional equipment or dealer installed accessories.

\*Estimated average based on standard build optional equipment.

CCC (Cargo Carrying Capacity)\*\* - is the amount of weight available for fresh potable water, cargo, additional optional equipment and accessories. CCC is equal to GVWR minus UVW. Available CCC should accommodate fresh potable water (8.3 lbs per gallon). Before filling the fresh water tank, empty the black and grey tanks to provide for more cargo capacity.

\*\*Estimated average based on standard build optional equipment.



Apex Nanos	185 BH	186 BH	187 RB	191 RBS	194 BHS	203 RBK	208 BHS	213 RDS
Hitch Weight (lbs.)	400	446	462	406	428	478	516	467
Carrying Capacity (lbs.)	1,294	1,034	1,342	1,234	1,166	2,084	2,052	2,174
UVW (lbs.)	3,406	3,666	3,358	3,466	3,634	3,916	3,948	3,826
GVWR (lbs.)	4,700	4,700	4,700	4,700	4,800	6,000	6,000	6,000
Ext. Length (Incl. Bumper to Hitch)	20' 7"	21' 5"	21' 5"	21' 11"	22' 8"	23' 5"	25'	25' 1"
Ext. Height (Incl. A/C)	9' 10"	9' 9"	9' 9"	9' 10"	9' 10"	9' 9"	10'	9' 11"
Int. Height (Coach)	77"	77"	77"	77"	77"	77"	77"	77"
Awning Length	12'	15'	12'	12'	14'	15'	14'	15'
Fresh Water Capacity (gal.)	50	50	50	50	50	50	50	50
Grey Water Capacity (gal.)	30	30	30	30	30	35	35	35
Waste Water Capacity (gal.)	30	30	30	30	30	35	35	35



Learn More  
Scan this barcode using a QR Reader on your smart phone to learn more about Forest River.

