

APEX

LIGHTWEIGHT • EASY TO TOW

PERFECT FOR SMALLER TOW VEHICLES



ULTRALITE



NANO



REMOTE

Designed for towing by today's half-ton trucks, minivans and SUVs. All units are available under 6,500 lbs. in 18' - 34' lengths.

Super Bed Storage



Entertainment Center



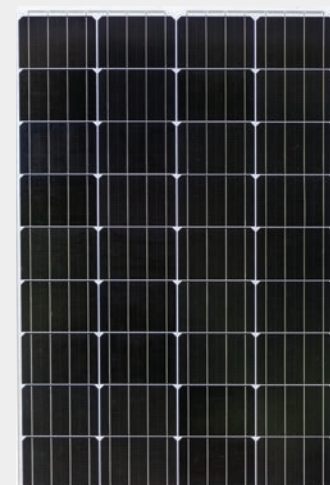
Optional 12V Tank Heater Pads (Nano models)



Farm Style Stainless Steel Sink, One-Piece Seamless Countertop and Kitchen Backsplash



Solid Steps



100 Watt Solar Panel with 10 AMP Control Charger to Battery



Outside Kitchen



Camp Kitchen

APEX CONSTRUCTION FEATURES

Low Profile - Better Towability

Dicor Crossflex Synthetic Thermoplastic Roofing System

- Extreme tear and puncture resistance
- High solar reflectance
- High thermal emissivity
- Lightweight
- Flexible

Fiberglass Front Cap

- ¾ Front fiberglass cap for superior strength
- Automotive glass front window with superior UV protection
- Front stone guard
- Integrated LED accent lights

EXTENDED CAMPING
HEATED & ENCLOSED UNDERBELLY

Double axle floor plans only.

ALUMICAGE™
CONSTRUCTION

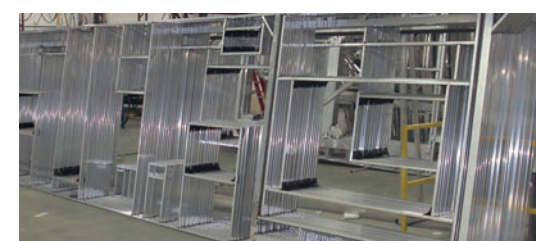


Apex Is Certified Green TRA Emerald Level Rated

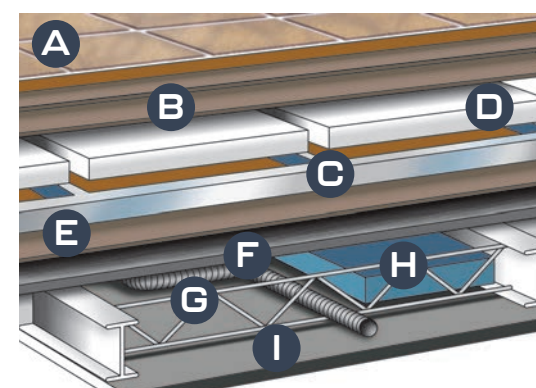
As a Certified Green RV, APEX utilizes effective production techniques in combination with healthy materials, plus efficient usage of energy and water to produce a high quality RV with less environmental impact.



Aluminum Reinforced Vacuum-bonded Roof

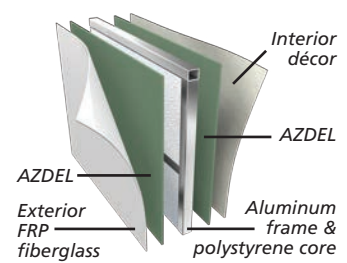


Welded Aluminum Framing



Six Layer Laminated Floor

- A Residential durable insulated floor covering
- B Double layer Luan plywood top decking
- C Welded aluminum frame
- D Block foam structural insulation
- E Luan plywood bottom decking
- F Darco waterproof floor wrap
- G Cross member support
- H Holding tanks
- I Heated and enclosed underbelly (Double axle models)



Weight matters 50% lighter than wood



Let it rain - no mold, rot, mildew, warping or delamination



Unaffected by changes in temperature & humidity



Twice the thermal insulation of plywood



Free of formaldehyde, toxic odors and chemicals



Longer RV life



Quieter RVs



No deforestation



Lower Center of Gravity for Better Towability

- 3M Breathable graphics
- Tinted, safety glass windows
- Welded aluminum structure, vacuum-bonded sidewalls and rear wall, laminated floor
- Aluminum reinforced vacuum-bonded roof
- Dicor Crossflex roofing membrane
- Azdel composite exterior/interior sidewall and rear wall panels
- Aerodynamic front profile with fiberglass front cap and integrated window
- (2) 20 lb. LP tanks
- Insulated slam latch doors with magnetic hold-ups (N/A Nanos)
- Smooth exterior fiberglass skin
- Aluminum framed openings
- Fully enclosed, heated underbelly (Double axle models)
- Fully welded tubular aluminum floor structure
- Schwintek™ and rack and pinion slide systems (Deep slides)
- Congoleum® DiamondFlor flooring
- Powder E-coated, welded I-beam frame with full-depth crossmembers
- Dexter® E-Z Lube® axle hubs (Nano) Lippert axles (Ultralite)
- Nitrogen filled radial tires



423 N. Main Street • P.O. Box 30 • Middlebury, IN 46540
To learn more about Coachmen RV and our products and see how Coachmen is making the easy life easier, visit coachmenrv.com/travel-trailers/apex-ultra-lite



Learn More
Scan this barcode using a QR Reader on your smart phone to learn more about Forest River.



Each Forest River RV is weighed at the manufacturing facility prior to shipping. A label identifying the unloaded vehicle weight of the actual unit and the cargo carrying capacity is applied to every Forest River RV prior to leaving our facilities. The load capacity of your unit is designated by weight, not by volume, so you cannot necessarily use all available space when loading your unit. All information contained in this brochure is believed to be accurate at the time of publication. However, during the model year, it may be necessary to make revisions and Forest River, Inc., reserves the right to make all such changes without notice, including prices, colors, materials, equipment and specifications as well as the addition of new models and the discontinuance of models shown in this brochure. Therefore, please consult with your Forest River dealer and confirm the existence of any materials, design or specifications that are material to your purchase decision. ©2022 Apex by Coachmen RV, a Division of Forest River, Inc., a Berkshire Hathaway company. All rights reserved. 1/22