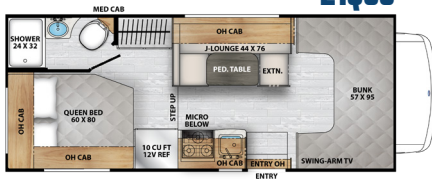
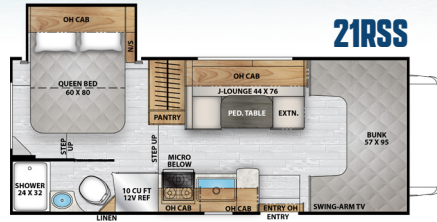


# FREELANDER

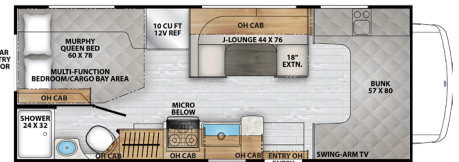
**21QSS**



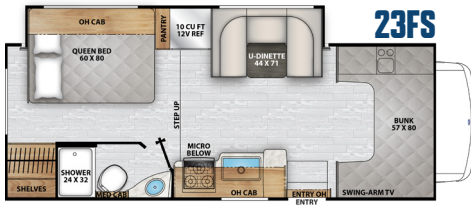
**21RSS**



**22XG**

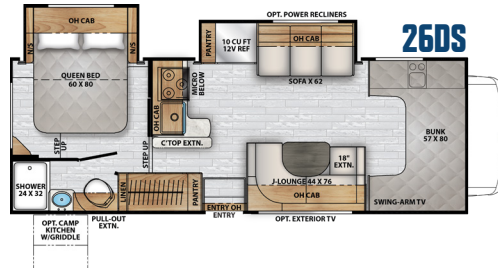


**23FS**



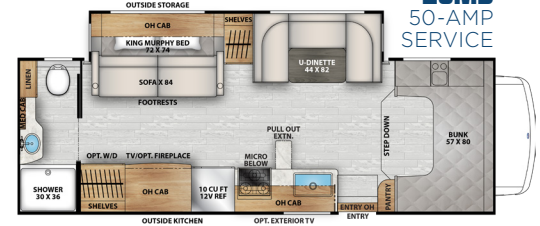
\* Opt. 2nd A/C

**26DS**

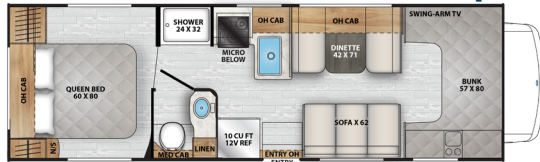


\* Opt. 2nd A/C

**26MB**  
50-AMP SERVICE

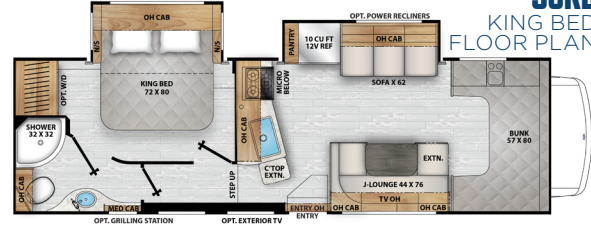


**27QB**



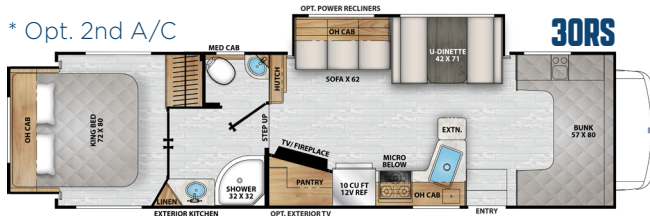
\* Opt. 2nd A/C

**30KB**  
KING BED  
FLOOR PLAN



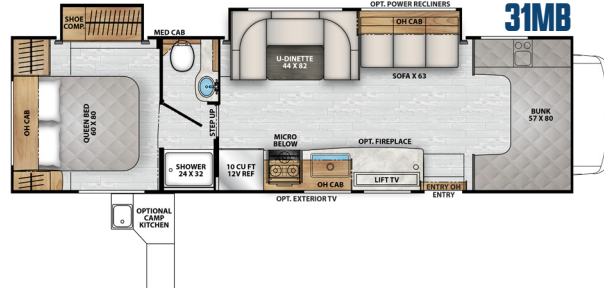
\* Opt. 2nd A/C

**30RS**



\* Opt. 2nd A/C

**31MB**



## KEY FEATURES

- Residential 80" Length Queen & King Size Beds (N/A 22XG, 26MB)
- Large 57" x 80" Cab-Over Sleeping Area with 800lb. Capacity
  - 57" x 95" on SS Models (21QSS, 21RSS)
- 15k BTU A/C with Heat Pump
  - Optional Rear A/C on 26DS, 26MB, 30KB, 30RS, 31MB
- 10 Cu. Ft. 12V Refrigerator
- Aquaview SHOWERMISER Water Saver (N/A 21QSS, 21RSS)
- Tankless Water Heater
- Auto-Gen Start (N/A 21QSS, 21RSS)
- Max-Length Power Patio Awning with LED Light Strip (15' through 21' Lengths)
- AlphaPly TPO Seamless 1-Piece Roof Material (Lifetime Material Warranty)
- Roof Solar Prep
- CRV Super Springs Ride - Self Adjusting Rear Helper Spring (N/A 21QSS, 21RSS, 22XG, 27QB)
- Starlink Prep (N/A 21QSS, 21RSS)

# FREELANDER SPECIFICATIONS

MODEL	21QSS	21RSS	22XG	23FS	26DS	26MB	27QB	30KB	30RS	31MB
CHASSIS	FORD E350/ CHEVY 3500	FORD E350/ CHEVY 3500	FORD E350/ CHEVY 3500	FORD E350/ CHEVY 3500	FORD E450	FORD E450	FORD E350/ CHEVY 3500	FORD E450	FORD E450	FORD E450
ENGINE	V8-7.3L/ V8-6.6L	V8-7.3L/ V8-6.6L	V8-7.3L/ V8-6.6L	V8-7.3L/ V8-6.6L	V8-7.3L	V8-7.3L	V8-7.3L/ V8-6.6L	V8-7.3L	V8-7.3L	V8-7.3L
HORSE POWER	325/401	325/401	325/401	325/401	325	325	325/401	325	325	325
TORQUE	450/464	450/464	450/464	450/464	450	450	450/464	450	450	450
WHEEL BASE	158"/159"	158"/159"	158"/159"	176"/177"	190"	190"	190"/191"	202"	TBD	223"
GVWR (LBS.)	12,500/ 12,300	12,500/ 12,300	12,500/ 12,300	14,500/ 12,300	14,500	14,500	12,500/ 12,300	14,500	14,500	14,500
GCWR (LBS.)	18,500/ 20,000	18,500/ 20,000	18,500/ 20,000	18,500/ 20,000	22,000	22,000	18,500/ 20,000	22,000	22,000	22,000
UVW (APPROX. LBS.)	9,400	10,000	9,600/ 9,350	10,800	11,500	12,500	10,294	12,000	TBD	23,000
GAWR FRONT (LBS.)	5,000/ 4,300	5,000/ 4,300	5,000/ 4,300	5,000/ 4,300	5,000	5,000	5,000/ 4,300	5,000	5,000	5,000
GAWR REAR (LBS.)	8,500/ 8,600	8,500/ 8,600	8,500/ 8,600	8,500/ 8,600	9,600	9,600	8,500/ 8,600	9,600	9,600	9,600
INTERIOR HEIGHT	6' 11"	6' 11"	6' 11"	6' 11"	6' 11"	6' 6"	6' 11"	6' 11"	6' 11"	6' 11"
EXTERIOR WIDTH	8' 4"	8' 4"	8' 4"	8' 4"	8' 4"	8' 4"	8' 4"	8' 4"	8' 4"	8' 4"
EXTERIOR HEIGHT (W/ A/C)	10' 10"	10' 10"	10' 10"	10' 10"	10' 11"	10' 11"	10' 11"	10' 11"	10' 11"	10' 11"
EXTERIOR LENGTH (WITH BUMPER)	23' 11"/ 24' 5"	24' 3"/ 24' 9"	24' 3"/ 24' 9"	26' 0"/ 26' 6"	27' 5"	28' 6"	29' 6"/ 30' 0"	31' 10"	32' 11"	32' 11"
TOW CAPACITY (LBS.)	5,000/ 7,500	5,000/ 7,500	5,000/ 7,500	5,000/ 7,500	7,500	7,500	5,000/ 7,500	7,500	7,500	7,500
FUEL CAPACITY (GAL.)	55/57	55/57	55/57	55/57	55	55	55/57	55	55	55
LP CAPACITY (LBS.)	86	86	86	86	86	86	86	86	86	86
FRESH WATER CAPACITY	41 GAL	43 GAL	41 GAL	43 GAL	50 GAL	49 GAL	40 GAL	48 GAL	TBD	50 GAL
WATER HEATER CAPACITY	TANKLESS	TANKLESS	TANKLESS	TANKLESS	TANKLESS	TANKLESS	TANKLESS	TANKLESS	TANKLESS	TANKLESS
GREY TANK CAPACITY	28 GAL	28 GAL	28 GAL	31 GAL	31 GAL	32 GAL	31 GAL	31 GAL	TBD	32 GAL
BLACK TANK CAPACITY	22 GAL	31 GAL	31 GAL	31 GAL	31 GAL	32 GAL	31 GAL	31 GAL	TBD	29 GAL
EXTERIOR STORAGE	75 CU FT	55 CU FT	38 CU FT	40 CU FT	60 CU FT	60 CU FT	69 CU FT	80 CU FT	TBD	100 CU FT
AWNING LENGTH	15'	15'	15'	17'	18'	19'	20'	21'	TBD	21'

**GVWR (Gross Vehicle Weight Rating)** is the maximum permissible weight of the unit when fully loaded. It includes all weights, inclusive of all fluids, occupants, cargo, optional equipment and accessories. For safety and product performance do NOT exceed the GVWR.

**GCWR (Gross Combined Weight Rating)** is the maximum permissible loaded weight of your motor home and any towed trailer or towed vehicle. Actual GCWR of this vehicle may be limited by the sum of the GVWR and the installed hitch receiver maximum capacity rating; see hitch rating label for detail.

**GAWR (Gross Axle Weight Rating)** is the maximum permissible weight, including cargo, fluids, optional equipment and accessories that can be safely supported by each axle.

**UVW (Unloaded Vehicle Weight)\*** is the typical weight of the unit as manufactured at the factory. It includes all weight at the unit's axle(s), including full fuel, all fluids and LP Gas. The UVW does not include cargo, fresh potable water, additional optional equipment or dealer installed accessories.

\*Estimated Average based on standard build optional equipment.

**CCC (Cargo Carrying Capacity)\*\*** is the amount of weight available for fresh potable water, cargo, passengers, additional optional equipment and accessories. CCC is equal to GVWR minus UVW. Available CCC should accommodate fresh potable water (8.3 lbs per gallon). Before filling the fresh water tank, empty the black and gray tanks to provide for more cargo capacity.

\*\* Estimated average based on standard build optional equipment

Each Coachmen motorhome is weighed at the manufacturing facility prior to shipping. A label identifying the unloaded vehicle weight of the actual unit and the cargo carrying capacity is applied to every Coachmen motorhome prior to leaving our facilities.

The load capacity of your unit is designated by weight, not by volume, so you cannot necessarily use all available space when loading your unit.

Actual towing capacity is dependent upon your particular loading and towing circumstances, which includes the GVWR, GAWR and GCWR as well as adequate trailer brakes. Please refer to the Operator's Manual of your vehicle for further towing information.

All information contained in this brochure is believed to be accurate at the time of publication. However, during the model year, it may be necessary to make revisions and Coachmen reserves the right to make all such changes without notice, including prices, colors, materials, equipment and specifications as well as the addition of new models and the discontinuance of models shown in this brochure. Therefore, please consult with your Coachmen dealer and confirm the existence of any materials, design or specifications that are material to your purchase decision. 9/25

©Copyright 2025 Coachmen RV a Division of Forest River Inc - All Rights Reserved.

## FEATURED STANDALONE OPTIONS

Driver/Passenger Swivel Seats  
(N/A 21QSS, 21RSS, 27QB)

Solid Surface Kitchen Countertops w/ SS Sink  
(26MB, 26DS, 30KB, 31MB)

200W Roof Solar Panel w/ Dual AGM Batteries  
(N/A 21QSS, 21RSS)

Equalizer Stabilizer Jacks  
(N/A 21QSS, 21RSS, 22XG)

Hydraulic Leveling Jacks (N/A 21QSS, 21RSS, 22XG)

Additional Options Available - See Website  
for Details

## ESCALADE PACKAGE - OPTIONAL (N/A on Chevy Chassis)

Heated Mirrors, Dual Batteries, 5G/WiFi Booster, Convection Oven, Kitchen Faucet with Spray Head, Child Safety Net in Cabover, Cab Over and Bedroom Power Vent Fan with Maxxair Cover, Upgraded Running Boards, Leatherette Cockpit Seat Covers, Side View Cameras



### Learn More:

Scan this barcode using a QR reader on your smart phone to learn more about Forest River.



# COACHMEN

A division of Forest River, Inc.

423 N. Main Street P.O. Box 30  
Middlebury, IN 46540

To learn more about Coachmen RV and our products and see how Coachmen is making the easy life easier, call us toll free at **(800) 353-7383**, or visit [www.coachmenrv.com](http://www.coachmenrv.com)