



REMOTE



VISIT US ONLINE!

7' WIDE SERIES

12 R

NEW



WEIGHT: 2,678 LENGTH: 16' 8"



12.1 R

NEW



WEIGHT: 2,678 LENGTH: 16' 8"



12.2 R

NEW

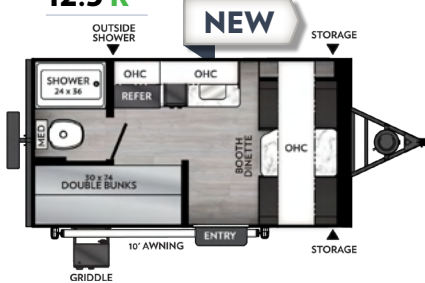


WEIGHT: TBD LENGTH: 16' 10"



12.3 R

NEW

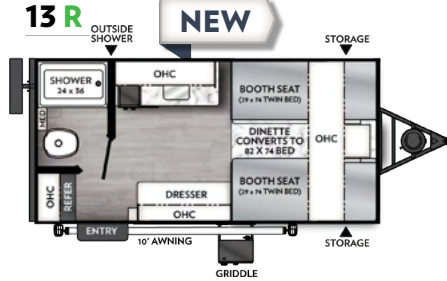


WEIGHT: TBD LENGTH: 16' 10"



13 R

NEW

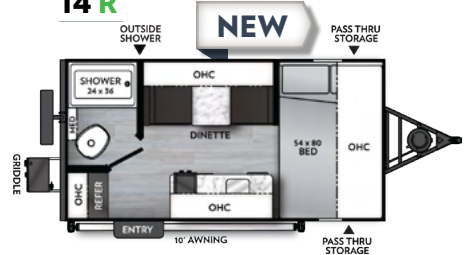


WEIGHT: TBD LENGTH: 18' 3"



14 R

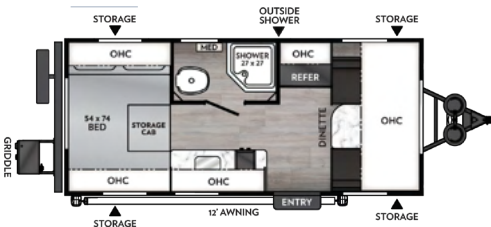
NEW



WEIGHT: 2,753 LENGTH: 17' 7"



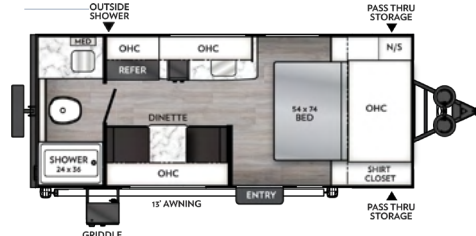
16 R



WEIGHT: 2,827 LENGTH: 19' 9"



17 R



WEIGHT: 3,178 LENGTH: 20' 8"



18.2 R



WEIGHT: 3,077 LENGTH: 20' 8"



IT'S TIME TO GET REMOTE!

*CHECK YOUR SPECIFIC VEHICLE MANUFACTURER, MODEL, YEAR, TOW PACKAGE OPTIONS, AND ENGINE SIZE FOR FACTORY RECOMMENDED TOWING CAPACITIES BEFORE TOWING ANY RV



423 N. Main Street • P.O. Box 30 • Middlebury, IN 46540
To learn more about Coachmen RV and our products and see how Coachmen is making the easy life easier, visit coachmenrv.com/remote



Learn More:
Scan this barcode
using a QR reader on
your smart phone to
learn more about
Forest River.



Each Forest River RV is weighed at the manufacturing facility prior to shipping. A label identifying the unloaded vehicle weight of the actual unit and the cargo-carrying capacity is applied to every Forest River RV prior to leaving our facilities. The load capacity of your unit is designated by weight, not by volume, so you cannot necessarily use all available space when loading your unit. All information contained in this brochure is believed to be accurate at the time of publication. However, during the model year, it may be necessary to make revisions and Forest River, Inc. reserves the right to make all such changes without notice, including price, color, materials, equipment and specifications as well as the addition of new models and the discontinuation of models shown in this brochure. Therefore, please consult with your Forest River dealer and confirm the existence of any materials, design or specifications that are material to your purchase decision. ©2026 Remote by Coachmen RV, a Division of Forest River, Inc., a Berkshire Hathaway company. All rights reserved. CRM-2026-12-020

REMOTE PACKAGE (MANDATORY):

Vacuum-Bonded Laminated Double Azdel® Fiberglass Sidewalls, Interior & Exterior Crowned Roof, Laminated Aluminum Frame Floor, LED Light & Front Stone Guard, Alumacage Construction, 4 Stabilizer Jacks, LP Quick Connect, Tankless Water Heater, H/C Outside Shower, Black Tank Flush, Swing Away Assist Handle, Friction Hinge Entry Door, Aluminum Solid Step Entry W/ Adjustable Legs, Magnetic Baggage Door Catches, Hard Valances W/ Roller Shades, LED Interior Lights, Microwave W/ Air Fryer, 2-Burner Cook-Top, 12V Refer, Large Stainless Single Kitchen Sink W/ Drying Rack Roller Cover, TV Mount Area, Shower/ Tub Surround, Skylight In Shower, Mattress W/ Cover, B/U Camera Mount, Battery Disconnect Switch, 12V High Powered 3 Speed Vent Fan In Kitchen Area, Pre-wired 12V Outlets & USB Chargers, Direct Vent Furnace, Power Awning W/ LED Light, Full Size Spare Tire W/ Carrier,

8K Roof A/C, 12V Heat Pads For Black, Grey, And Fresh Water Tanks, Single 20 lb LP Tank, Mounted Wireless Bluetooth Speaker, 200W Solar Panel Mounted On Roof, 30 Amp Charge Controller, Cast Iron Griddle

OPTIONS

- Additional 200W Solar Panel (With This Option Chosen, Unit = 400W Of Solar Total)
- Upgrade 15" All Terrain Tires W/ Aluminum Rims (Goodyear Wrangler) with Matching Spare (12R, 12.1R, 12.2R, 13R, 14R, 16R)
- Upgrade 16" All Terrain Tires W/ Aluminum Rims (Goodyear Wrangler) With Matching Spare (17R, 18.2R)

STANDARDS - EXTERIOR

- Starlink Prep
- 14" D Rated Tires W/ Matching Spare (12R, 12.1R, 12.2R, 12.3R, 13R, 14R, 16R)
- 15" D Rated Tires W/ Matching Spare (17R, 18.2R)
- XL Quick Dump Freshwater Tank Drain
- Wired For Lithium Ion Batteries
- Dexter 3500 lb Axle (12R, 12.1R, 12.2R, 12.3R, 13R, 14R, 16R)
- Dexter 4400 lb Axle (17R, 18.2R)
- Large Exterior Storage On All Models

STANDARDS - INTERIOR

- Powered Vent Fan In Bathroom
- 6'4" Of Interior Height
- Full Extension Drawer Glides
- Large & Deep Overhead Storage Throughout
- Medicine Cabinet W/ Mirror In Bathrooms
- XL Opening Windows Throughout



SPECIFICATIONS

	12R	12.1R	12.2R	12.3R	13R	14R	16R	17R	18.2R
Hitch Weight	326	326	TBD	TBD	TBD	316	312	431	362
Carrying Capacity	1,122	1,122	TBD	TBD	TBD	1,047	973	1,368	1,423
UVW (Unloaded Weight)	2,678	2,678	TBD	TBD	TBD	2,753	2,827	3,178	3,077
GVWR	3,800	3,800	3,800	3,800	3,800	3,800	3,800	4,500	4,500
Exterior Length (Bumper to Hitch)	16' 8"	16' 8"	16' 10"	16' 10"	18' 3"	17' 7"	19' 9"	20' 8"	20' 8"
Exterior Height (Includes A/C)	10' 2"	10' 2"	10' 2"	10' 2"	10' 2"	10' 2"	10' 2"	10' 2"	10' 2"
Interior Height	77"	77"	77"	77"	77"	77"	77"	77"	77"
Awning Length	9' 6"	9' 6"	9'	9'	10'	10'	12'	13'	13'
Fresh Water Capacity (Gallons)	52	52	52	52	52	52	52	52	52
Grey Water Capacity (Gallons)	27	27	27	27	27	27	35	35	35
Waste Water Capacity (Gallons)	27	27	27	27	27	27	35	35	35



423 N. Main Street • P.O. Box 30 • Middlebury, IN 46540
To learn more about Coachmen RV and our products and see how Coachmen is making the easy life easier, visit coachmenrv.com/remote



Each Forest River RV is weighed at the manufacturing facility prior to shipping. A label identifying the unloaded vehicle weight of the actual unit and the cargo carrying capacity is applied to every Forest River RV prior to leaving our facilities. The load capacity of your unit is designated by weight, not by volume, so you cannot necessarily use all available space when loading your unit. All information contained in this brochure is believed to be accurate at the time of publication. However, during the model year, it may be necessary to make revisions and Forest River, Inc., reserves the right to make all such changes without notice, including prices, colors, materials, equipment and specifications as well as the addition of new models and the discontinuance of models shown in this brochure. Therefore, please consult with your Forest River dealer and confirm the existence of any materials, design or specifications that are material to your purchase decision. ©2026 Remote by Coachmen RV, a Division of Forest River, Inc., a Berkshire Hathaway company. All rights reserved. CRM 2956 1/2026